

Product Name: RPS6 (N-term) Mouse Monoclonal Antibody
Catalog #: AMM85961

Summary

Production Name	RPS6 (N-term) Mouse Monoclonal Antibody
Description	Mouse Monoclonal Antibody
Host	Mouse
Application	WB,IHC,ICC,FC
Reactivity	Human, Mouse, Rat

Performance

Conjugation	Unconjugated
Modification	Unmodified
Isotype	Mouse IgG1
Clonality	Monoclonal
Form	Liquid
Storage	Store at 4°C short term. Aliquot and store at -20°C long term. Avoid freeze/thaw cycles.
Buffer	Liquid in PBS containing 50% glycerol, 0.5% protective protein and 0.02% sodium azide.
Purification	Affinity Purification

Immunogen

Gene Name	RPS6 (N-term)
Alternative Names	40S ribosomal protein S6, Phosphoprotein NP33, RPS6
Gene ID	6194.0
SwissProt ID	P62753.This RPS6 antibody is generated from a mouse immunized with RPS6 recombinant protein.

Application

Dilution Ratio	WB:1:1000,IHC:1:100-1:500,ICC:1:25,FC:1:25
Molecular Weight	28.7kDa

Product Name: RPS6 (N-term) Mouse Monoclonal Antibody
Catalog #: AMM85961



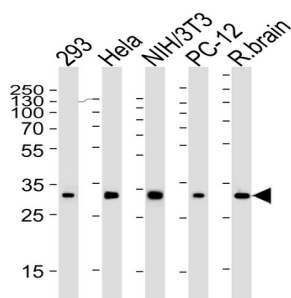
Background

May play an important role in controlling cell growth and proliferation through the selective translation of particular classes of mRNA.

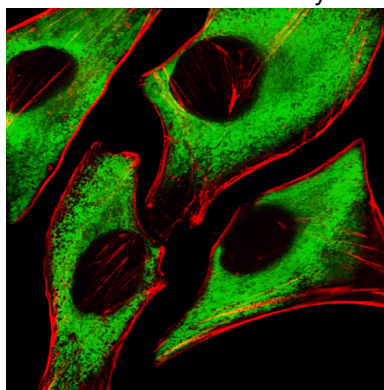
Research Area

PI3K-Akt signaling pathway

Image Data

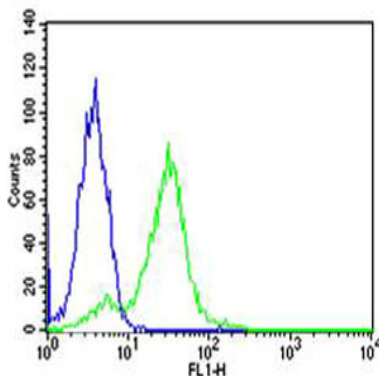


Western blot analysis of lysates from 293, Hela, mouse NIH/3T3, rat PC-12 cell line and rat brain tissue lysate (from left to right), using RPS6 Antibody (N-term) (Cat. #AMM85961). AMM85961 was diluted at 1:2000 at each lane. A goat anti-mouse IgG H&L (HRP) at 1:3000 dilution was used as the secondary antibody. Lysates at 35 µg per lane.

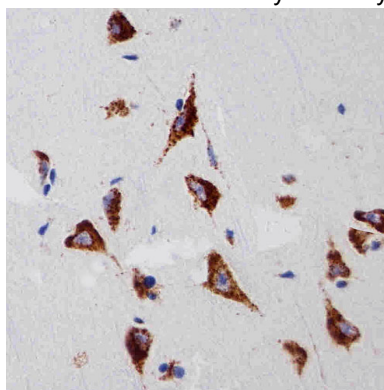


Fluorescent image of Hela cells stained with RPS6 Antibody (N-term) (Cat#AMM85961). AMM85961 was diluted at 1:25 dilution. An Alexa Fluor® 488-conjugated goat anti-mouse IgG at 1:400 dilution was used as the secondary antibody (green). Cytoplasmic actin was counterstained with Alexa Fluor® 555 conjugated with Phalloidin (red).

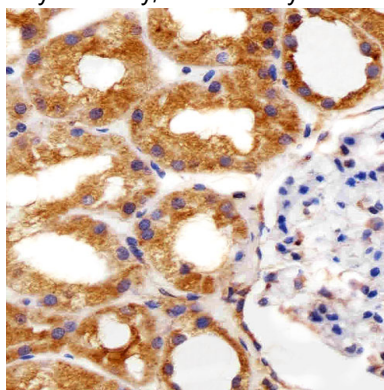
Product Name: RPS6 (N-term) Mouse Monoclonal Antibody
Catalog #: AMM85961



Flow cytometric analysis of Hela cells using RPS6 Antibody (N-term)(green, Cat#AMM85961) compared to an isotype control of mouse IgG1(blue). AMM85961 was diluted at 1:25 dilution. An Alexa Fluor® 488 goat anti-mouse IgG at 1:400 dilution was used as the secondary antibody.

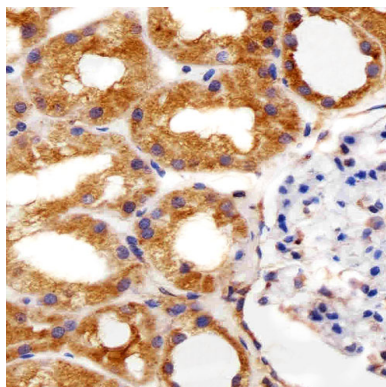


Immunohistochemical analysis of paraffin-embedded H. brain section using RPS6 Antibody (N-term)(Cat#AMM85961). AMM85961 was diluted at 1:25 dilution. A peroxidase-conjugated goat anti-mouse IgG at 1:400 dilution was used as the secondary antibody, followed by DAB staining.

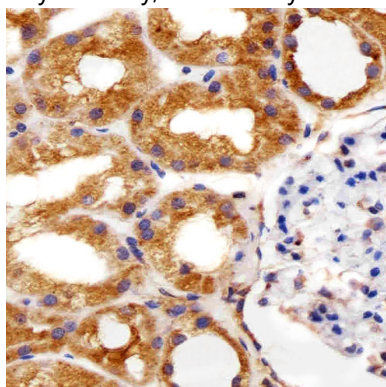


Immunohistochemical analysis of paraffin-embedded H. kidney section using RPS6 Antibody (N-term)(Cat#AMM85961). AMM85961 was diluted at 1:25 dilution. A peroxidase-conjugated goat anti-mouse IgG at 1:400 dilution was used as the secondary antibody, followed by DAB staining.

Product Name: RPS6 (N-term) Mouse Monoclonal Antibody
Catalog #: AMM85961



Immunohistochemical analysis of paraffin-embedded H. kidney section using RPS6 Antibody (N-term)(Cat#AMM85961). AMM85961 was diluted at 1:25 dilution. A peroxidase-conjugated goat anti-mouse IgG at 1:400 dilution was used as the secondary antibody, followed by DAB staining.



Immunohistochemical analysis of paraffin-embedded H. kidney section using RPS6 Antibody (N-term)(Cat#AMM85961). AMM85961 was diluted at 1:25 dilution. A peroxidase-conjugated goat anti-mouse IgG at 1:400 dilution was used as the secondary antibody, followed by DAB staining.

Note

For research use only.