

Product Name: ALDH2 Mouse Monoclonal Antibody**Catalog #: AMM85960**

For research use only.

Summary

Description	Mouse monoclonal Antibody
Host	Mouse
Application	WB,IHC,ICC,FC
Reactivity	Human, Mouse, Rat
Conjugation	Unconjugated
Modification	Unmodified
Isotype	Mouse IgG1
Clonality	Monoclonal
Form	Liquid
Concentration	1mg/ml
Storage	Aliquot and store at -20°C (valid for 12 months). Avoid freeze/thaw cycles.
Shipping	Ice bags
Buffer	Purified antibody in TBS with 0.05% sodium azide.
Purification	Affinity Purification

Application

Dilution Ratio	WB 1:500-1:2000,IHC 1:100-1:500,ICC 1:20-1:50,FC 1:20-1:50
Molecular Weight	56.4kDa

Antigen Information

Gene Name	ALDH2
Alternative Names	Aldehyde dehydrogenase, mitochondrial, ALDH class 2, ALDH-E2, ALDHI, ALDH2, ALDM
Gene ID	217.0
SwissProt ID	P05091
Immunogen	This ALDH2 Monoclonal antibody is generated from mouse immunized with ALDH2 recombinant protein.

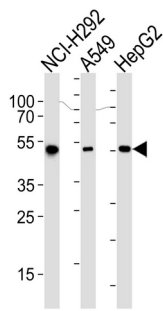
Background

This protein belongs to the aldehyde dehydrogenase family of proteins. Aldehyde dehydrogenase is the second enzyme of the major oxidative pathway of alcohol metabolism. Two major liver isoforms of this enzyme, cytosolic and mitochondrial, can be

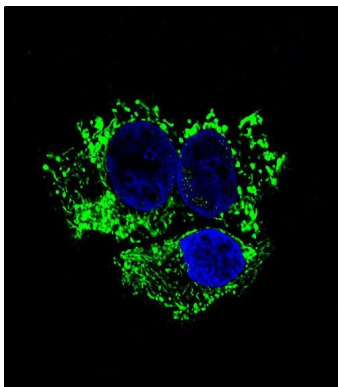
distinguished by their electrophoretic mobilities, kinetic properties, and subcellular localizations. Most Caucasians have two major isozymes, while approximately 50% of Orientals have only the cytosolic isozyme, missing the mitochondrial isozyme. A remarkably higher frequency of acute alcohol intoxication among Orientals than among Caucasians could be related to the absence of the mitochondrial isozyme. This gene encodes a mitochondrial isoform, which has a low K_m for acetaldehydes, and is localized in mitochondrial matrix.

Research Area

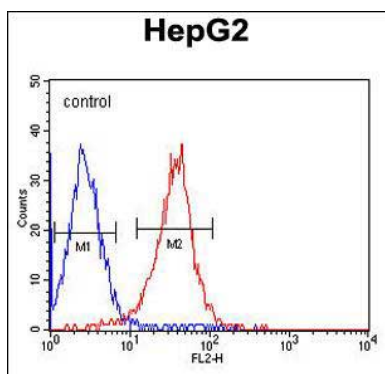
Image Data



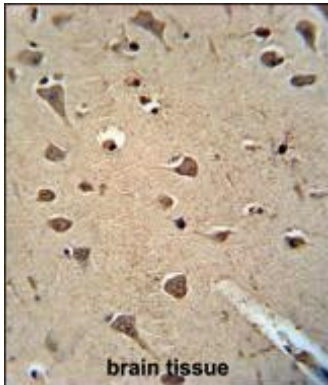
Western blot analysis of lysates from NCI-H292, A549, HepG2 cell line (from left to right), using ALDH2 Antibody. ALDH2 Mouse Monoclonal Antibody was diluted at 1:1000 at each lane. A goat anti-mouse IgG H&L(HRP) at 1:3000 dilution was used as the secondary antibody. Lysates at 35µg per lane.



Confocal immunofluorescent analysis of ALDH2 Antibody (Cat. #AMM85960) with HepG2 cells followed by Alexa Fluor® 488-conjugated goat anti-mouse IgG (green). DAPI was used to stain the cell nuclear (blue).



ALDH2 Monoclonal Antibody (Cat. #AMM85960) flow cytometric analysis of HepG2 cells (right histogram) compared to a negative control cell (left histogram). PE-conjugated goat-anti-mouse secondary antibodies were used for the analysis.



ALDH2 Monoclonal Antibody (Cat. #AMM85960) immunohistochemistry analysis in formalin fixed and paraffin embedded human brain tissue followed by peroxidase conjugation of the secondary antibody and DAB staining. This data demonstrates the use of the ALDH2 Monoclonal Antibody for immunohistochemistry. Clinical relevance has not been evaluated.