

**Product Name: CREB3L4 (M01) Mouse Monoclonal Antibody**  
**Catalog #: AMM85952**

---

## Summary

<b>Production Name</b>	CREB3L4 (M01) Mouse Monoclonal Antibody
<b>Description</b>	Mouse Monoclonal Antibody
<b>Host</b>	Mouse
<b>Application</b>	WB
<b>Reactivity</b>	Human, Mouse, Rat

## Performance

<b>Conjugation</b>	Unconjugated
<b>Modification</b>	Unmodified
<b>Isotype</b>	Mouse IgG1
<b>Clonality</b>	Monoclonal
<b>Form</b>	Liquid
<b>Storage</b>	Store at 4°C short term. Aliquot and store at -20°C long term. Avoid freeze/thaw cycles.
<b>Buffer</b>	Purified antibody in TBS with 0.05% sodium azide.
<b>Purification</b>	Affinity Purification

## Immunogen

<b>Gene Name</b>	CREB3L4 (M01) Cyclic AMP-responsive element-binding protein 3-like protein 4, cAMP-responsive element-binding protein 3-like protein 4, Androgen-induced basic leucine zipper protein, AlbZIP, Attaching to CRE-like 1, ATCE1, Cyclic AMP-responsive element-binding protein 4, CREB-4, cAMP-responsive element-binding protein 4, Transcript induced in spermiogenesis protein 40, Tisp40, hJAL, Processed cyclic AMP-responsive element-binding protein 3-like protein 4, CREB3L4, AIBZIP, CREB4, JAL
<b>Alternative Names</b>	
<b>Gene ID</b>	148327.0
<b>SwissProt ID</b>	Q8TEY5. This CREB3L4 antibody is generated from mice immunized with a recombinant between 1-300 amino acids from the region of human CREB3L4.

## Application

---

**Product Name: CREB3L4 (M01) Mouse Monoclonal Antibody**  
**Catalog #: AMM85952**

**Dilution Ratio** WB:1:1000

**Molecular Weight** 43.4kDa

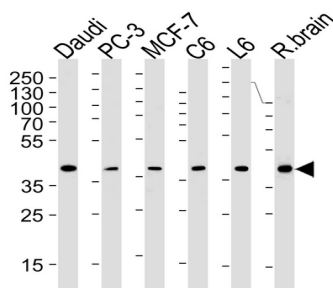
## Background

Transcriptional activator that may play a role in the unfolded protein response. Binds to the UPR element (UPRE) but not to CRE element. Preferentially binds DNA with to the consensus sequence 5'-T[GT]ACGT[GA][GT]-3' and has transcriptional activation activity from UPRE. Binds to NF-kappa-B site and has transcriptional activation activity from NF-kappa-B-containing regulatory elements (By similarity).

## Research Area

PI3K-Akt signaling pathway

## Image Data



CREB3L4 Antibody (M01) (Cat.# AMM85952) western blot analysis in Daudi,PC-3,MCF-7,rat C6 and L6 cell line ,rat brain tissue lysates (35µg/lane).This demonstrates the CREB3L4 (M01)antibody detected the CREB3L4 (M01)protein (arrow).

## Note

For research use only.