

**Product Name: CALCA/CT Mouse Monoclonal Antibody****Catalog #: AMM85929**

For research use only.

**Summary**

<b>Description</b>	Mouse monoclonal Antibody
<b>Host</b>	Mouse
<b>Application</b>	WB
<b>Reactivity</b>	Human
<b>Conjugation</b>	Unconjugated
<b>Modification</b>	Unmodified
<b>Isotype</b>	Mouse IgM
<b>Clonality</b>	Monoclonal
<b>Form</b>	Liquid
<b>Concentration</b>	1mg/ml
<b>Storage</b>	Aliquot and store at -20°C (valid for 12 months). Avoid freeze/thaw cycles.
<b>Shipping</b>	Ice bags
<b>Buffer</b>	Purified antibody in PBS with 0.05% sodium azide.
<b>Purification</b>	Affinity Purification

**Application**

<b>Dilution Ratio</b>	WB 1:500-1:1000
<b>Molecular Weight</b>	15.5kDa

**Antigen Information**

<b>Gene Name</b>	CALCA/CT
<b>Alternative Names</b>	Calcitonin, Calcitonin, Katalcalcin, Calcitonin carboxyl-terminal peptide, CCP, PDN-21, CALCA, CALC1
<b>Gene ID</b>	796.0
<b>SwissProt ID</b>	P01258
<b>Immunogen</b>	This CALCA/CT antibody is generated from mice immunized with a KLH conjugated synthetic peptide between 56-84 amino acids from human CALCA/CT.

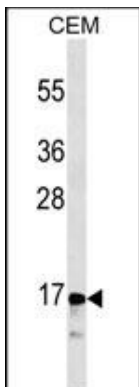
**Background**

This gene encodes the peptide hormones calcitonin, calcitonin gene-related peptide and katalcalcin by tissue-specific alternative

RNA splicing of the gene transcripts and cleavage of inactive precursor proteins. Calcitonin is involved in calcium regulation and acts to regulate phosphorus metabolism. Calcitonin gene-related peptide functions as a vasodilator while katacalcin is a calcium-lowering peptide. Multiple transcript variants encoding different isoforms have been found for this gene.

## Research Area

## Image Data



CALCA/CT Antibody western blot analysis in CEM cell line lysates (35µg/lane). This demonstrates the CALCA/CT antibody detected the CALCA/CT protein (arrow).