
Product Name: MS4A1/CD20 Mouse Monoclonal Antibody**Catalog #: AMM85927**

For research use only.

Summary

Description	Mouse monoclonal Antibody
Host	Mouse
Application	WB,IHC
Reactivity	Human
Conjugation	Unconjugated
Modification	Unmodified
Isotype	Mouse IgG1
Clonality	Monoclonal
Form	Liquid
Concentration	1mg/ml
Storage	Aliquot and store at -20°C (valid for 12 months). Avoid freeze/thaw cycles.
Shipping	Ice bags
Buffer	Purified antibody in PBS with 0.05% sodium azide,1%protective protein and 50% glycerol.prepared by Saturated Ammonium Sulfate (SAS) .
Purification	Affinity Purification

Application

Dilution Ratio	WB 1:500-1:1000,IHC 1:500-1:1000
Molecular Weight	33.1kDa

Antigen Information

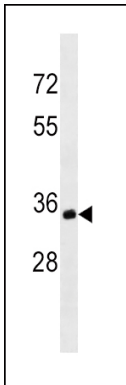
Gene Name	MS4A1/CD20 B-lymphocyte antigen CD20, B-lymphocyte surface antigen B1, Bp35, Leukocyte surface
Alternative Names	antigen Leu-16, Membrane-spanning 4-domains subfamily A member 1, CD20, MS4A1, CD20
Gene ID	931.0
SwissProt ID	P11836
Immunogen	This MS4A1/CD20 antibody is generated from mice immunized with a KLH conjugated synthetic peptide between 266-294 amino acids from the C-terminal region of human MS4A1/CD20.

Background

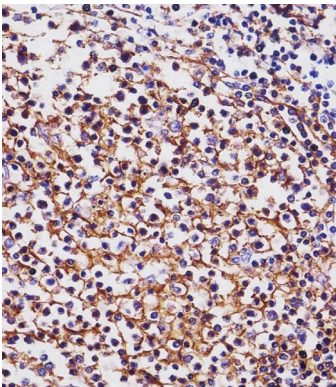
This gene encodes a member of the membrane-spanning 4A gene family. Members of this nascent protein family are characterized by common structural features and similar intron/exon splice boundaries and display unique expression patterns among hematopoietic cells and nonlymphoid tissues. This gene encodes a B-lymphocyte surface molecule which plays a role in the development and differentiation of B-cells into plasma cells. This family member is localized to 11q12, among a cluster of family members. Alternative splicing of this gene results in two transcript variants which encode the same protein.

Research Area

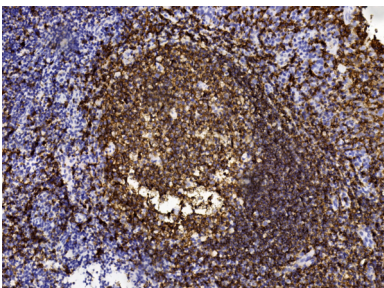
Image Data



MS4A1/CD20 Antibody (C-term) western blot analysis in Ramos cell line lysates (35 µg/lane). This demonstrates the MS4A1/CD20 antibody detected the MS4A1/CD20 protein (arrow).



AMM85927 staining MS4A1/CD20 in human tonsil tissue sections by Immunohistochemistry (IHC-P - paraformaldehyde-fixed, paraffin-embedded sections). Tissue was fixed with formaldehyde and blocked with 3% BSA for 0.5 hour at room temperature; antigen retrieval was by heat mediation with a citrate buffer (pH6). Samples were incubated with MS4A1/CD20 Mouse Monoclonal Antibody (1/100) for 1 hour at 37°C. A undiluted biotinylated goat polyvalent antibody was used as the secondary antibody.



Immunohistochemical analysis of paraffin-embedded Human tonsil section using Pink1 (Cat#AMM85927). AMM85927 was diluted at 1:1000 dilution. A undiluted biotinylated goat polyvalent antibody was used as the secondary, followed by DAB staining.