
Product Name: MMP2 Mouse Monoclonal Antibody**Catalog #: AMM85917**

For research use only.

Summary

Description	Mouse monoclonal Antibody
Host	Mouse
Application	WB,IHC,ICC
Reactivity	Human
Conjugation	Unconjugated
Modification	Unmodified
Isotype	Mouse IgG2b
Clonality	Monoclonal
Form	Liquid
Concentration	1mg/ml
Storage	Aliquot and store at -20°C (valid for 12 months). Avoid freeze/thaw cycles.
Shipping	Ice bags
Buffer	Purified antibody in TBS with 0.05% sodium azide.
Purification	Affinity Purification

Application

Dilution Ratio	WB 1:500-1:1000,IHC 1:100-1:500,ICC 1:20-1:50
Molecular Weight	73.9kDa

Antigen Information

Gene Name	MMP2
Alternative Names	72 kDa type IV collagenase, 72 kDa gelatinase, Gelatinase A, Matrix metalloproteinase-2, MMP-2, TBE-1, PEX, MMP2, CLG4A
Gene ID	4313.0
SwissProt ID	P08253
Immunogen	This MMP2 monoclonal antibody is generated from mouse immunized with MMP2 recombinant protein.

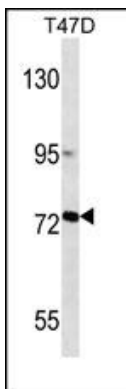
Background

Proteins of the matrix metalloproteinase (MMP) family are involved in the breakdown of extracellular matrix in normal

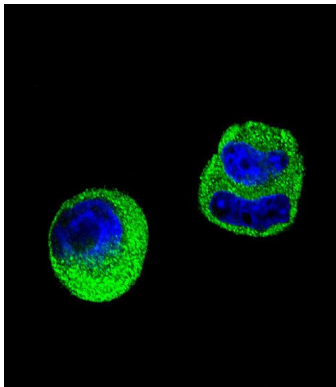
physiological processes, such as embryonic development, reproduction, and tissue remodeling, as well as in disease processes, such as arthritis and metastasis. Most MMP's are secreted as inactive proproteins which are activated when cleaved by extracellular proteinases. This gene encodes an enzyme which degrades type IV collagen, the major structural component of basement membranes. The enzyme plays a role in endometrial menstrual breakdown, regulation of vascularization and the inflammatory response. Mutations in this gene have been associated with Winchester syndrome and Nodulosis-Arthropathy-Osteolysis (NAO) syndrome. Two transcript variants encoding different isoforms have been found for this gene.

Research Area

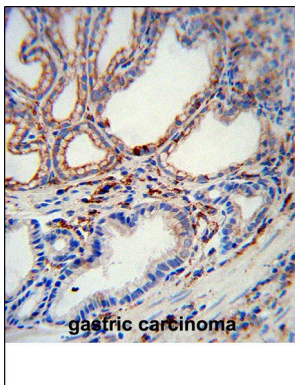
Image Data



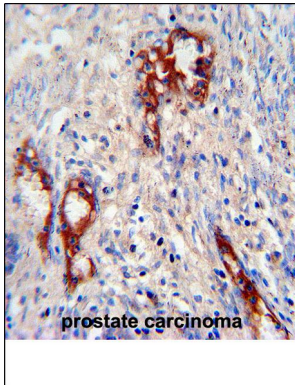
MMP2 western blot analysis in T47D cell line lysates (35µg/lane). This demonstrates the MMP2 antibody detected the MMP2 protein (arrow).



Confocal immunofluorescent analysis of MMP2 Antibody (Cat#AMM85917) with MCF-7 cell followed by Alexa Fluor® 488-conjugated goat anti-mouse IgG (green). DAPI was used to stain the cell nuclear (blue).



0



MMP2 Antibody (Cat. #AMM85917) immunohistochemistry analysis in formalin fixed and paraffin embedded human prostate carcinoma followed by peroxidase conjugation of the secondary antibody and DAB staining. This data demonstrates the use of MMP2 Antibody for immunohistochemistry. Clinical relevance has not been evaluated.