
Product Name: Phospho-PLM(S68) Mouse Monoclonal Antibody**Catalog #: AMM85905**

For research use only.

Summary

Description	Mouse monoclonal Antibody
Host	Mouse
Application	WB
Reactivity	Mouse
Conjugation	Unconjugated
Modification	Phosphorylated
Isotype	Mouse IgG1
Clonality	Monoclonal
Form	Liquid
Concentration	1mg/ml
Storage	Aliquot and store at -20°C (valid for 12 months). Avoid freeze/thaw cycles.
Shipping	Ice bags
Buffer	Purified antibody in PBS with 0.05% sodium azide.
Purification	Affinity Purification

Application

Dilution Ratio	WB 1:200-1:1000
Molecular Weight	10.3kDa

Antigen Information

Gene Name	Phospho-PLM(S68)
Alternative Names	Phospholemman, FXYP domain-containing ion transport regulator 1, Fxyd1, Plm
Gene ID	56188.0
SwissProt ID	Q9Z239

Immunogen This PLM Antibody is generated from mice immunized with a KLH conjugated synthetic phosphopeptide corresponding to amino acid residues surrounding S68 of mouse PLM.

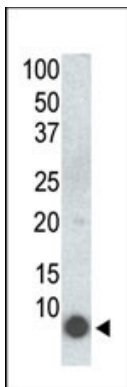
Background

This gene encodes a member of the FXYP family of small membrane proteins that share a 35-amino acid signature sequence domain, beginning with the sequence PFXYP and containing 7 invariant and 6 highly conserved amino acids. The protein

encoded by this gene is a plasma membrane substrate for several kinases, including protein kinase A, protein kinase C, NIMA kinase, and myotonic dystrophy kinase. It is thought to form an ion channel or regulate ion channel activity and act as an accessory protein of Na,K-ATPase. Alternatively spliced transcript variants have been described.

Research Area

Image Data



Western blot analysis of Phospho-PLM(S68) Mouse Monoclonal Antibody in 293 cells transfected with a plasmid encoding PLM.