

---

**Product Name: CBR1 Mouse Monoclonal Antibody****Catalog #: AMM85092**

For research use only.

**Summary**

|                      |   |
|----------------------|---|
| <b>Description</b>   | Mouse monoclonal Antibody   |
| <b>Host</b>          | Mouse   |
| <b>Application</b>   | WB,ICC  |
| <b>Reactivity</b>    | Human,Mouse,Rat   |
| <b>Conjugation</b>   | Unconjugated  |
| <b>Modification</b>  | Unmodified  |
| <b>Isotype</b>       | Mouse IgG1  |
| <b>Clonality</b>     | Monoclonal  |
| <b>Form</b>          | Liquid  |
| <b>Concentration</b> | 1mg/ml  |
| <b>Storage</b>       | Aliquot and store at -20°C (valid for 12 months). Avoid freeze/thaw cycles.               |
| <b>Shipping</b>      | Ice bags  |
| <b>Buffer</b>        | Purified antibody in PBS with 0.05% sodium azide,0.5%protective protein and 50% glycerol. |
| <b>Purification</b>  | Affinity Purification   |

**Application**

|                         |  |
|-------------------------|--|
| <b>Dilution Ratio</b>   | WB 1:500-1:1000,ICC 1:50-1:200             |
| <b>Molecular Weight</b> | Calculated MW: 30 kDa; Observed MW: 30 kDa |

**Antigen Information**

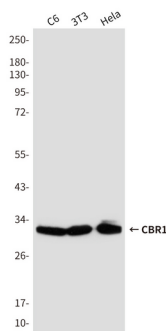
|                          |  |
|--------------------------|--|
| <b>Gene Name</b>         | CBR1<br>15 hydroxyprostaglandin dehydrogenase [NADP ]; 15-hydroxyprostaglandin dehydrogenase [NADP ]; Carbonyl reductase [NADPH] 1; CBR 1; CBR1; CBR1_HUMAN; CRN;  |
| <b>Alternative Names</b> | NADPH dependent carbonyl reductase 1; NADPH-dependent carbonyl reductase 1; Prostaglandin 9 ketoreductase; Prostaglandin 9-ketoreductase; Prostaglandin E(2) 9 reductase; Prostaglandin-E(2) 9-reductase; SDR21C1. |
| <b>Gene ID</b>           | 873.0  |
| <b>SwissProt ID</b>      | P16152   |
| <b>Immunogen</b>         | Purified recombinant human CBR1 protein fragments expressed in E.coli  |

## Background

NADPH-dependent reductase with broad substrate specificity. Catalyzes the reduction of a wide variety of carbonyl compounds including quinones, prostaglandins, menadione, plus various xenobiotics.

## Research Area

## Image Data



Western blot analysis of CBR1 in C6, 3T3 and HeLa lysates using CBR1 antibody.