

**Product Name:** alpha Tubulin Mouse Monoclonal Antibody**Catalog #:** AMM85079

For research use only.

**Summary**

<b>Description</b>	Mouse monoclonal Antibody
<b>Host</b>	Mouse
<b>Application</b>	WB,IHC,ICC,IP
<b>Reactivity</b>	Human,Mouse,Rat
<b>Conjugation</b>	Unconjugated
<b>Modification</b>	Unmodified
<b>Isotype</b>	Mouse IgG1
<b>Clonality</b>	Monoclonal
<b>Form</b>	Liquid
<b>Concentration</b>	1mg/ml
<b>Storage</b>	Aliquot and store at -20°C (valid for 12 months). Avoid freeze/thaw cycles.
<b>Shipping</b>	Ice bags
<b>Buffer</b>	Purified antibody in PBS with 0.05% sodium azide,0.5%protective protein and 50% glycerol.
<b>Purification</b>	Affinity Purification

**Application**

<b>Dilution Ratio</b>	WB 1:500-1:1000,IHC 1:50-1:100,ICC 1:50-1:200,IP 1:10-1:20
<b>Molecular Weight</b>	Calculated MW: 50 kDa; Observed MW: 50 kDa

**Antigen Information**

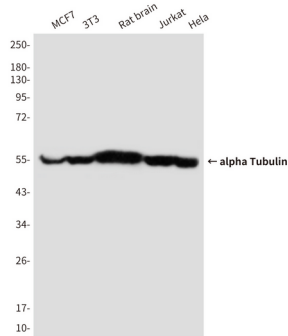
<b>Gene Name</b>	alpha Tubulin
<b>Alternative Names</b>	Tubulin alpha-1B chain; Alpha-tubulin ubiquitous; Tubulin K-alpha-1; Tubulin alpha-ubiquitous chain
<b>Gene ID</b>	10376.0
<b>SwissProt ID</b>	P68363
<b>Immunogen</b>	Recombinant Protein of Tubulin alpha-1A chain

**Background**

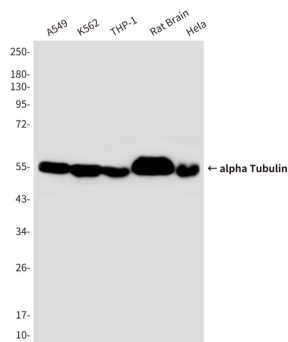
TUBA1A Tubulin is the major constituent of microtubules. It binds two moles of GTP, one at an exchangeable site on the beta chain and one at a non-exchangeable site on the alpha-chain.

## Research Area

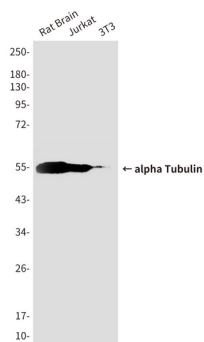
## Image Data



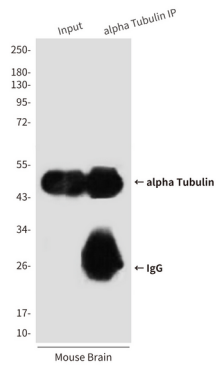
Western blot analysis of alpha Tubulin in MCF-7, 3T3, rat Brain, Jurkat and Hela lysates using alpha tubulin antibody.



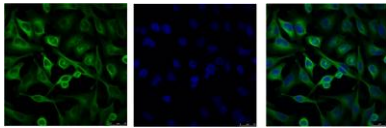
Western blot analysis of alpha Tubulin in A549, K562, THP-1, rat Brain, Hela lysates using alpha Tubulin antibody.



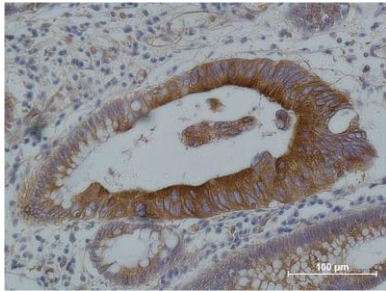
Western blot analysis of alpha Tubulin in rat brain, Jurkat, 3T3 lysates using alpha Tubulin antibody.



Immunoprecipitation analysis of alpha Tubulin in mouse Brain Tissue lysates using alpha Tubulin antibody.



Immunofluorescence analysis of alpha Tubulin in HeLa using alpha Tubulin antibody (Left), and DAPI (blue).



Immunohistochemistry analysis of paraffin-embedded Human Colon carcinoma using alpha tubulin antibody. High-pressure and temperature Sodium Citrate pH 6.0 was used for antigen retrieval.