

**Product Name: NSE Mouse Monoclonal Antibody****Catalog #: AMM85072**

For research use only.

**Summary**

<b>Description</b>	Mouse monoclonal Antibody
<b>Host</b>	Mouse
<b>Application</b>	WB,IHC,ICC
<b>Reactivity</b>	Human,Mouse,Rat
<b>Conjugation</b>	Unconjugated
<b>Modification</b>	Unmodified
<b>Isotype</b>	Mouse IgG1
<b>Clonality</b>	Monoclonal
<b>Form</b>	Liquid
<b>Concentration</b>	1mg/ml
<b>Storage</b>	Aliquot and store at -20°C (valid for 12 months). Avoid freeze/thaw cycles.
<b>Shipping</b>	Ice bags
<b>Buffer</b>	Purified antibody in PBS with 0.05% sodium azide,0.5%protective protein and 50% glycerol.
<b>Purification</b>	Affinity Purification

**Application**

<b>Dilution Ratio</b>	WB 1:500-1:1000,IHC 1:50-1:100,ICC 1:50-1:200
<b>Molecular Weight</b>	Calculated MW: 47 kDa; Observed MW: 47 kDa

**Antigen Information**

<b>Gene Name</b>	NSE
<b>Alternative Names</b>	ENO2; Gamma-enolase; 2-phospho-D-glycerate hydro-lyase; Enolase 2; Neural enolase; Neuron-specific enolase; NSE
<b>Gene ID</b>	2026.0
<b>SwissProt ID</b>	P09104
<b>Immunogen</b>	Synthetic Peptide of NSE

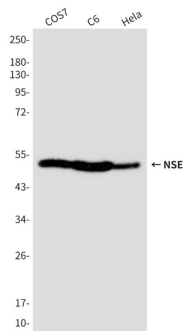
**Background**

ENO2 an enzyme with 2-phospho-D-glycerate hydro-lyase activity. One of the three enolase isoenzymes found in mammals. This isoenzyme, a homodimer, is found in mature neurons and cells of neuronal origin. A switch from alpha enolase to gamma

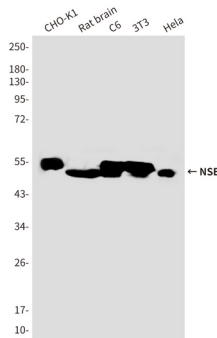
enolase occurs in neural tissue during development in rats and primates.

## Research Area

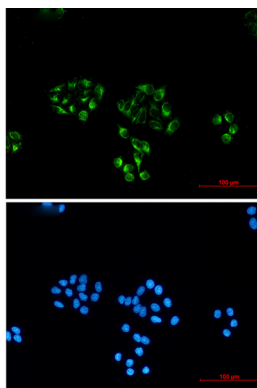
## Image Data



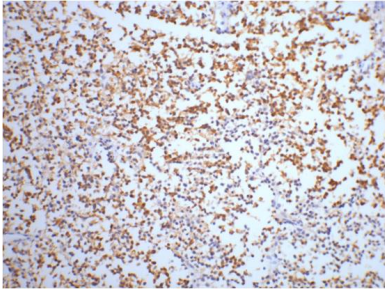
Western blot analysis of Enolase2 in COS7, C6 and HeLa lysates using Enolase2 antibody.



Western blot analysis of NSE in Enolase in CHO-K1, rat brain, C6, 3T3, HeLa lysates using Enolase antibody.



Immunocytochemistry analysis of NSE (green) in HeLa using NSE antibody, and DAPI(blue)



Immunohistochemistry analysis of paraffin-embedded Human small cell carcinoma of lung tissue using NSE antibody. High-pressure and temperature Sodium Citrate pH 6.0 was used for antigen retrieval.