

Product Name: 14-3-3 eta Mouse Monoclonal Antibody**Catalog #: AMM85062**

For research use only.

Summary

Description	Mouse monoclonal Antibody
Host	Mouse
Application	WB
Reactivity	Human,Mouse,Rat
Conjugation	Unconjugated
Modification	Unmodified
Isotype	Mouse IgG
Clonality	Monoclonal
Form	Liquid
Concentration	1mg/ml
Storage	Aliquot and store at -20°C (valid for 12 months). Avoid freeze/thaw cycles.
Shipping	Ice bags
Buffer	Purified antibody in PBS with 0.05% sodium azide,0.5%protective protein and 50% glycerol.
Purification	Affinity Purification

Application

Dilution Ratio	WB 1:500-1:1000
Molecular Weight	Calculated MW: 28 kDa; Observed MW: 28 kDa

Antigen Information

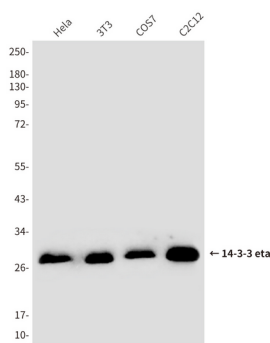
Gene Name	14-3-3 eta 14-3-3 protein eta; 1433F_HUMAN; Brain protein 14-3-3; eta isoform; HGNC:12853; Protein
Alternative Names	AS1; Tyrosine 3/tryptophan 5 monooxygenase activation protein eta polypeptide; YWHA 1; YWHA1; Ywhah.
Gene ID	7533.0
SwissProt ID	Q04917
Immunogen	Antibodies are produced by immunizing animals with a synthetic peptide corresponding to the sequence of human 14-3-3 η .

Background

Adapter protein implicated in the regulation of a large spectrum of both general and specialized signaling pathways. Binds to a large number of partners, usually by recognition of a phosphoserine or phosphothreonine motif. Binding generally results in the modulation of the activity of the binding partner.

Research Area

Image Data



Western blot analysis of 14-3-3 eta/YWHAH in HeLa, 3T3, COS7 and C2C12 lysates using 14-3-3 eta/YWHAH antibody.