

---

**Product Name: DNA PKcs Mouse Monoclonal Antibody****Catalog #: AMM85052**

For research use only.

**Summary**

<b>Description</b>	Mouse monoclonal Antibody
<b>Host</b>	Mouse
<b>Application</b>	WB,IHC,ICC,IP
<b>Reactivity</b>	Human
<b>Conjugation</b>	Unconjugated
<b>Modification</b>	Unmodified
<b>Isotype</b>	Mouse IgG1
<b>Clonality</b>	Monoclonal
<b>Form</b>	Liquid
<b>Concentration</b>	1mg/ml
<b>Storage</b>	Aliquot and store at -20°C (valid for 12 months). Avoid freeze/thaw cycles.
<b>Shipping</b>	Ice bags
<b>Buffer</b>	Purified antibody in PBS with 0.05% sodium azide,0.5%protective protein and 50% glycerol.
<b>Purification</b>	Affinity Purification

**Application**

<b>Dilution Ratio</b>	WB 1:500-1:1000,IHC 1:50-1:100,ICC 1:50-1:200,IP 1:10-1:20
<b>Molecular Weight</b>	Calculated MW: 469 kDa; Observed MW: 450 kDa

**Antigen Information**

<b>Gene Name</b>	DNA PKcs
<b>Alternative Names</b>	PRKDC; HYRC; HYRC1; DNA-dependent protein kinase catalytic subunit; DNA-PK catalytic subunit; DNA-PKcs; DNPK1; p460
<b>Gene ID</b>	5591.0
<b>SwissProt ID</b>	P78527
<b>Immunogen</b>	Purified recombinant human DNA-PKcs protein fragments expressed in E.coli

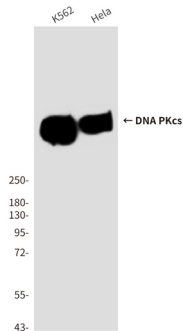
**Background**

The PRKDC gene encodes the catalytic subunit of a nuclear DNA-dependent serine/threonine protein kinase (DNA-PK). The second component is the autoimmune antigen Ku (MIM 152690), which is encoded by the G22P1 gene on chromosome 22q.

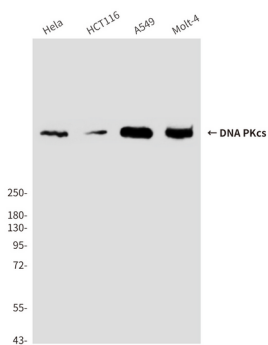
On its own, the catalytic subunit of DNA-PK is inactive and relies on the G22P1 component to direct it to the DNA and trigger its kinase activity; PRKDC must be bound to DNA to express its catalytic properties.

## Research Area

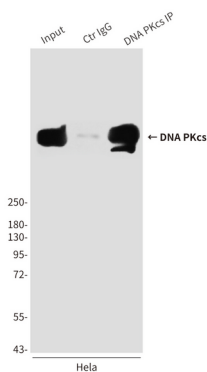
## Image Data



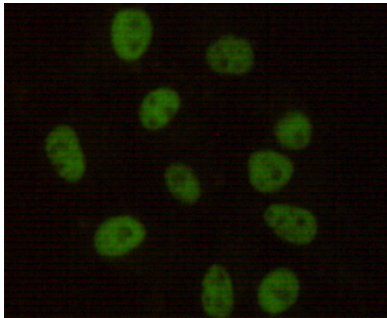
Western blot analysis of DNAPKcs in HeLa and K562 lysates using DNAPKcs antibody.



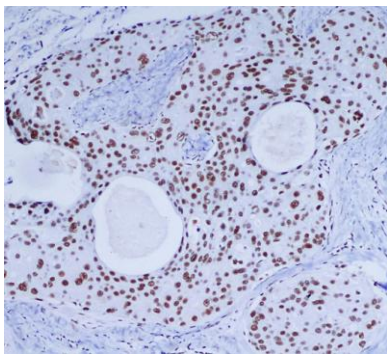
Western blot analysis of DNAPKcs in HeLa, Molt4, A549 and HCT116 lysates using DNAPKcs antibody.



Immunoprecipitation analysis of DNA PKcs in HeLa lysates using DNAPKcs antibody.



Immunocytochemistry analysis of DNA PKCs in HeLa using DNAPKcs antibody.



Immunohistochemistry analysis of paraffin-embedded Breast cancer using DNAPKcs antibody. High-pressure and temperature Sodium Citrate pH 6.0 was used for antigen retrieval.