

---

**Product Name: GRB2 Mouse Monoclonal Antibody****Catalog #: AMM85050**

For research use only.

**Summary**

|                      |   |
|----------------------|---|
| <b>Description</b>   | Mouse monoclonal Antibody   |
| <b>Host</b>          | Mouse   |
| <b>Application</b>   | WB  |
| <b>Reactivity</b>    | Human,Mouse,Rat   |
| <b>Conjugation</b>   | Unconjugated  |
| <b>Modification</b>  | Unmodified  |
| <b>Isotype</b>       | Mouse IgG1  |
| <b>Clonality</b>     | Monoclonal  |
| <b>Form</b>          | Liquid  |
| <b>Concentration</b> | 1mg/ml  |
| <b>Storage</b>       | Aliquot and store at -20°C (valid for 12 months). Avoid freeze/thaw cycles.               |
| <b>Shipping</b>      | Ice bags  |
| <b>Buffer</b>        | Purified antibody in PBS with 0.05% sodium azide,0.5%protective protein and 50% glycerol. |
| <b>Purification</b>  | Affinity Purification   |

**Application**

|                         |  |
|-------------------------|--|
| <b>Dilution Ratio</b>   | WB 1:500-1:1000                            |
| <b>Molecular Weight</b> | Calculated MW: 25 kDa; Observed MW: 25 kDa |

**Antigen Information**

|                          |  |
|--------------------------|--|
| <b>Gene Name</b>         | GRB2   |
| <b>Alternative Names</b> | GRB2; ASH; Growth factor receptor-bound protein 2; Adapter protein GRB2; Protein Ash; SH2/SH3 adapter GRB2 |
| <b>Gene ID</b>           | 2885.0   |
| <b>SwissProt ID</b>      | P62993   |
| <b>Immunogen</b>         | Recombinant protein of human GRB2.   |

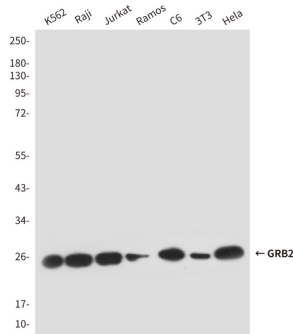
**Background**

Adapter protein that provides a critical link between cell surface growth factor receptors and the Ras signaling pathway.

## Research Area

TGF-beta signaling pathway, PI3K-Akt signaling pathway, MAPK signaling pathway

## Image Data



Western blot analysis of GRB2 in K562, Raji, Jurkat, Ramos, C6, 3T3 and HeLa lysates using GRB2 antibody.