

Product Name: HP1 gamma Mouse Monoclonal Antibody
Catalog #: AMM85039

Summary

Production Name	HP1 gamma Mouse Monoclonal Antibody
Description	Mouse Monoclonal Antibody
Host	Mouse
Application	WB,IP,IHC,ICC
Reactivity	Human,Mouse,Rat,Monkey,Hamster

Performance

Conjugation	Unconjugated
Modification	Unmodified
Isotype	Mouse IgG1
Clonality	Monoclonal
Form	Liquid
Storage	Store at 4°C short term. Aliquot and store at -20°C long term. Avoid freeze/thaw cycles.
Buffer	Purified antibody in PBS with 0.05% sodium azide,0.5%BSA and 50% glycerol.
Purification	Affinity Purification

Immunogen

Gene Name	HP1 gamma
Alternative Names	CBX3; Chromobox protein homolog 3; HECH; Heterochromatin protein 1 homolog gamma; HP1 gamma; Modifier 2 protein
Gene ID	11335.0
SwissProt ID	Q13185.Purified recombinant human HP1-gamma protein fragments expressed in E.coli.

Application

Dilution Ratio	WB:1:500-1:1000,IP:45677,IHC:1:50-1:100,ICC:1:50-1:200
Molecular Weight	Calculated MW: 21 kDa; Observed MW: 21 kDa

Product Name: HP1 gamma Mouse Monoclonal Antibody
Catalog #: AMM85039

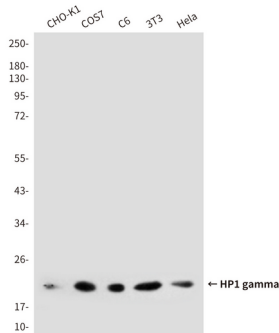


Background

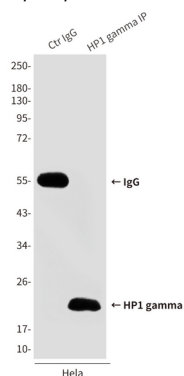
Recognizes and binds histone H3 tails methylated at 'Lys-9', leading to epigenetic repression. May contribute to the association of the heterochromatin with the inner nuclear membrane through its interaction with lamin B receptor (LBR). Involved in the formation of functional kinetochore through interaction with MIS12 complex proteins.

Research Area

Image Data

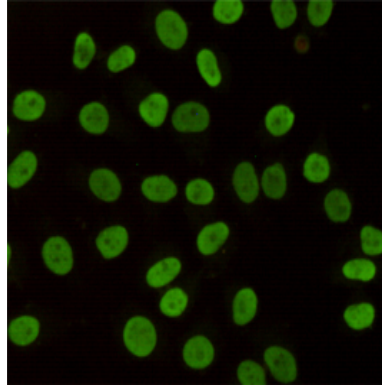


Western blot analysis of HP1gamma in HeLa, 3T3, C6, COS7 and CHO-K1 lysates using HP1 gamma antibody.

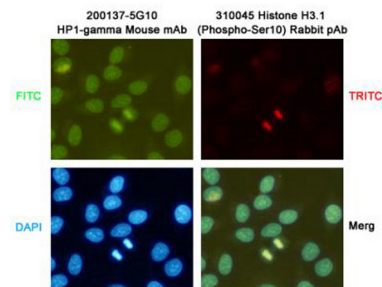


Immunoprecipitation analysis of HP1 gamma in HeLa lysates using HP1gamma antibody.

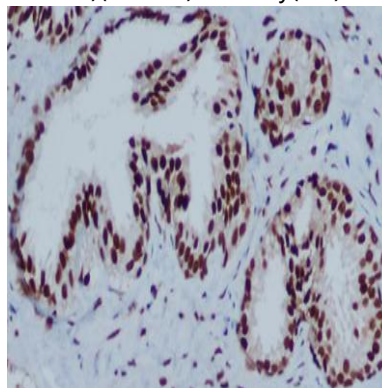
Product Name: HP1 gamma Mouse Monoclonal Antibody
Catalog #: AMM85039



Immunocytochemistry analysis of HP1 gamma in HeLa using HP1 gamma antibody.



Immunocytochemistry analysis of HP1 gamma in HeLa using HP1gamma (2001375G10) antibody(green) and Histone H3.1 (Phospho-Ser10)(310045)antibody(red).DAPI (blue).



Immunohistochemistry analysis of paraffin-embedded Prostate Cancer using HP1 gamma antibody.High-pressure and temperature Sodium Citrate pH 6.0 was used for antigen retrieval.

Note

For research use only.