
Product Name: EGFR Mouse Monoclonal Antibody**Catalog #: AMM85026**

For research use only.

Summary

Description	Mouse monoclonal Antibody
Host	Mouse
Application	WB,IHC,ICC
Reactivity	Human
Conjugation	Unconjugated
Modification	Unmodified
Isotype	Mouse IgG1
Clonality	Monoclonal
Form	Liquid
Concentration	1mg/ml
Storage	Aliquot and store at -20°C (valid for 12 months). Avoid freeze/thaw cycles.
Shipping	Ice bags
Buffer	Purified antibody in PBS with 0.05% sodium azide,0.5%protective protein and 50% glycerol.
Purification	Affinity Purification

Application

Dilution Ratio	WB 1:500-1:1000,IHC 1:50-1:100,ICC 1:50-1:200
Molecular Weight	Calculated MW: 134 kDa; Observed MW: 170 kDa

Antigen Information

Gene Name	EGFR
Alternative Names	EGFR; ERBB; ERBB1; HER1; Epidermal growth factor receptor; Proto-oncogene c-ErbB-1; Receptor tyrosine-protein kinase erbB-1
Gene ID	1956.0
SwissProt ID	P00533
Immunogen	Synthetic Peptide of EGFR

Background

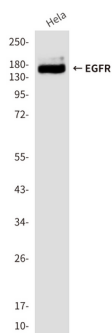
EGFR is a receptor tyrosine kinase. Receptor for epidermal growth factor (EGF) and related growth factors including TGF-alpha, amphiregulin, betacellulin, heparin-binding EGF-like growth factor, GP30 and vaccinia virus growth factor. Is involved in the

control of cell growth and differentiation. . A single-pass transmembrane tyrosine kinase. Ligand binding to this receptor results in receptor dimerization, autophosphorylation (in trans), activation of various downstream signaling molecules and lysosomal degradation.

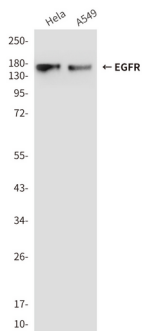
Research Area

TGF-beta signaling pathway,PI3K-Akt signaling pathway,MAPK signaling pathway,Jak-STAT signaling pathway,Hippo signaling pathway

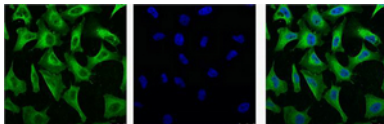
Image Data



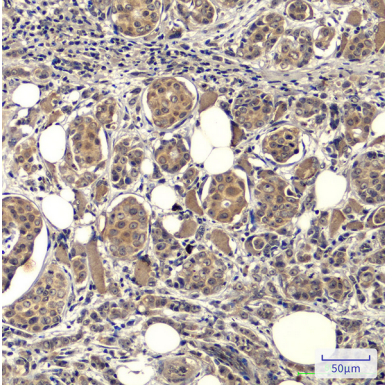
Western blot analysis of EGFR in HeLa lysates using EGFR antibody



Western blot analysis of EGFR in HeLa, A549 lysates using EGFR antibody



Immunofluorescence analysis of EGFR in HeLa using EGFR antibody (Left) and DAPI (Right).



Immunohistochemistry analysis of paraffin-embedded Human breast cancer tissue using EGFR antibody High-pressure and temperature Sodium Citrate pH 6.0 was used for antigen retrieval.