
Product Name: beta Catenin Mouse Monoclonal Antibody**Catalog #:** AMM85025

For research use only.

Summary

Description	Mouse monoclonal Antibody
Host	Mouse
Application	WB,IHC
Reactivity	Human,Mouse,Rat
Conjugation	Unconjugated
Modification	Unmodified
Isotype	Mouse IgG1
Clonality	Monoclonal
Form	Liquid
Concentration	1mg/ml
Storage	Aliquot and store at -20°C (valid for 12 months). Avoid freeze/thaw cycles.
Shipping	Ice bags
Buffer	Purified antibody in PBS with 0.05% sodium azide,0.5%protective protein and 50% glycerol.
Purification	Affinity Purification

Application

Dilution Ratio	WB 1:500-1:1000,IHC 1:50-1:100
Molecular Weight	Calculated MW: 85 kDa; Observed MW: 92 kDa

Antigen Information

Gene Name	beta Catenin
Alternative Names	CTNNB1; CTNNB; OK/SW-cl.35; Catenin beta-1; Beta-catenin
Gene ID	1499.0
SwissProt ID	P35222
Immunogen	Recombinant Protein of Catenin-β

Background

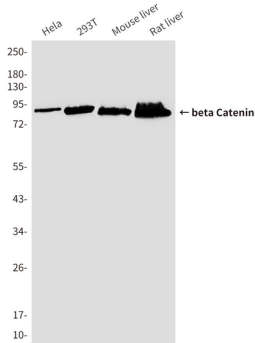
Beta-catenin is an adherens junction protein. Adherens junctions (AJs; also called the zonula adherens) are critical for the establishment and maintenance of epithelial layers, such as those lining organ surfaces. AJs mediate adhesion between cells, communicate a signal that neighboring cells are present, and anchor the actin cytoskeleton. In serving these roles, AJs regulate

normal cell growth and behavior.

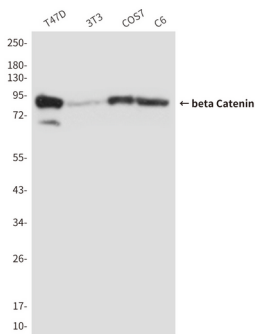
Research Area

Wnt signaling pathway, Hippo signaling pathway

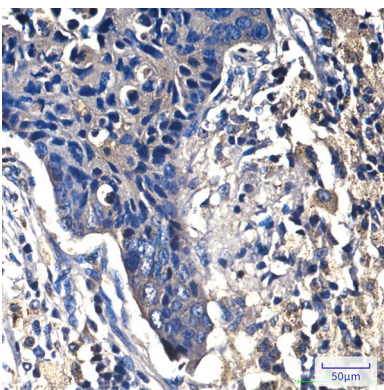
Image Data



Western blot analysis of beta Catenin (7E2) in Hela, 293T, mouse Liver, rat Liver lysates using β Catenin antibody.



Western blot analysis of beta Catenin in T47D, 3T3, COS7 and C6 lysates using β Catenin antibody.



Immunohistochemistry analysis of paraffin-embedded Human lung cancer tissue using beta Catenin antibody. High-pressure and temperature Sodium Citrate pH 6.0 was used for antigen retrieval.