

**Product Name: eIF4A1 Mouse Monoclonal Antibody****Catalog #: AMM85020**

For research use only.

**Summary**

<b>Description</b>	Mouse monoclonal Antibody
<b>Host</b>	Mouse
<b>Application</b>	WB,IHC,ICC
<b>Reactivity</b>	Human,Mouse,Rat
<b>Conjugation</b>	Unconjugated
<b>Modification</b>	Unmodified
<b>Isotype</b>	Mouse IgG1
<b>Clonality</b>	Monoclonal
<b>Form</b>	Liquid
<b>Concentration</b>	1mg/ml
<b>Storage</b>	Aliquot and store at -20°C (valid for 12 months). Avoid freeze/thaw cycles.
<b>Shipping</b>	Ice bags
<b>Buffer</b>	Purified antibody in PBS with 0.05% sodium azide,0.5%protective protein and 50% glycerol.
<b>Purification</b>	Affinity Purification

**Application**

<b>Dilution Ratio</b>	WB 1:500-1:1000,IHC 1:50-1:100,ICC 1:50-1:200
<b>Molecular Weight</b>	Calculated MW: 46 kDa; Observed MW: 46 kDa

**Antigen Information**

<b>Gene Name</b>	eIF4A1
<b>Alternative Names</b>	Eukaryotic initiation factor 4A-I; eIF-4A-I; eIF4A-I; ATP-dependent RNA helicase eIF4A-1
<b>Gene ID</b>	1973.0
<b>SwissProt ID</b>	P60842
<b>Immunogen</b>	Synthetic Peptide of eIF4A1

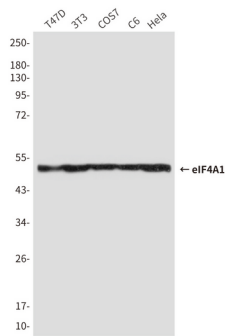
**Background**

ATP-dependent RNA helicase which is a subunit of the eIF4F complex involved in cap recognition and is required for mRNA binding to ribosome.

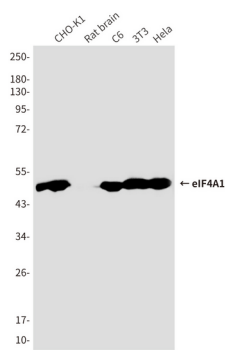
## Research Area

mTOR signaling pathway

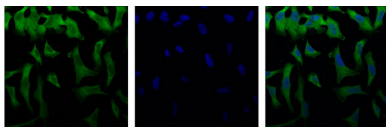
## Image Data



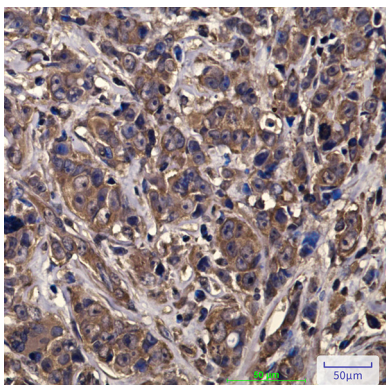
Western blot analysis of eIF4A1 in T47D, 3T3, COS7, C6 and HeLa lysates using eIF4A1 antibody.



Western blot analysis of eIF4A1 in CHO-K1, rat brain, C6, 3T3, HeLa lysates using eIF4A antibody.



Immunofluorescence analysis of eIF4A1 in HeLa using eIF4A1 antibody(Left) ,and DAPI (blue)



Immunohistochemistry analysis of paraffin-embedded Human breast cancer tissue using eIF4A1 antibody. High-pressure and temperature Sodium Citrate pH 6.0 was used for antigen retrieval.