

---

**Product Name: APG5L Mouse Monoclonal Antibody****Catalog #: AMM85013**

For research use only.

**Summary**

<b>Description</b>	Mouse monoclonal Antibody
<b>Host</b>	Mouse
<b>Application</b>	WB
<b>Reactivity</b>	Human,Mouse,Rat
<b>Conjugation</b>	Unconjugated
<b>Modification</b>	Unmodified
<b>Isotype</b>	Mouse IgG1
<b>Clonality</b>	Monoclonal
<b>Form</b>	Liquid
<b>Concentration</b>	1mg/ml
<b>Storage</b>	Aliquot and store at -20°C (valid for 12 months). Avoid freeze/thaw cycles.
<b>Shipping</b>	Ice bags
<b>Buffer</b>	Purified antibody in PBS with 0.05% sodium azide,0.5%protective protein and 50% glycerol.
<b>Purification</b>	Affinity Purification

**Application**

<b>Dilution Ratio</b>	WB 1:500-1:1000
<b>Molecular Weight</b>	Calculated MW: 32 kDa; Observed MW: 55 kDa

**Antigen Information**

<b>Gene Name</b>	APG5L
<b>Alternative Names</b>	APG 5L; APG5; APG5 autophagy 5 like; APG5 like; APG5-like; Apoptosis specific protein; ASP; ATG 5; ATG5 autophagy related 5 homolog; Autophagy protein 5; hAPG5
<b>Gene ID</b>	9474.0
<b>SwissProt ID</b>	Q9H1Y0
<b>Immunogen</b>	Synthetic peptide.

**Background**

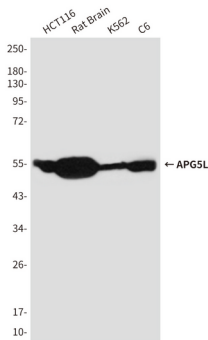
Required for autophagy. Conjugates to ATG12 and associates with isolation membrane to form cup-shaped isolation membrane and autophagosome. Involved in mitochondrial quality control after oxidative damage, and in subsequent cellular

longevity.

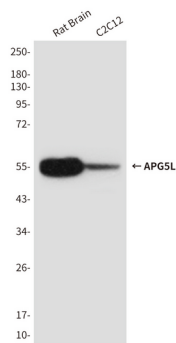
## Research Area

Autophagy, Apoptosis

## Image Data



Western blot analysis of Atg5 in HCT116, rat Brain, K562 and C6 lysates using Atg5 antibody.



Western blot analysis of APG5L in rat Brain and C2C12 lysates using Atg5 antibody.