

## Summary

<b>Production Name</b>	SHP1 Mouse Monoclonal Antibody
<b>Description</b>	Mouse Monoclonal Antibody
<b>Host</b>	Mouse
<b>Application</b>	WB,IP
<b>Reactivity</b>	Human

## Performance

<b>Conjugation</b>	Unconjugated
<b>Modification</b>	Unmodified
<b>Isotype</b>	Mouse IgG2a
<b>Clonality</b>	Monoclonal
<b>Form</b>	Liquid
<b>Storage</b>	Store at 4°C short term. Aliquot and store at -20°C long term. Avoid freeze/thaw cycles.
<b>Buffer</b>	Purified antibody in PBS with 0.05% sodium azide, 0.5% protective protein and 50% glycerol.
<b>Purification</b>	Affinity Purification

## Immunogen

<b>Gene Name</b>	SHP1
<b>Alternative Names</b>	PTPN6; HCP; PTP1C; Tyrosine-protein phosphatase non-receptor type 6; Hematopoietic cell protein-tyrosine phosphatase; Protein-tyrosine phosphatase 1C; PTP-1C; Protein-tyrosine phosphatase SHP-1; SH-PTP1
<b>Gene ID</b>	5777.0
<b>SwissProt ID</b>	P29350. Purified recombinant human SHP-1 protein fragments expressed in E.coli.

## Application

<b>Dilution Ratio</b>	WB:1:500-1:1000, IP:1:10-1:20
<b>Molecular Weight</b>	Calculated MW: 68 kDa; Observed MW: 68 kDa

**Product Name: SHP1 Mouse Monoclonal Antibody**  
**Catalog #: AMM85001**



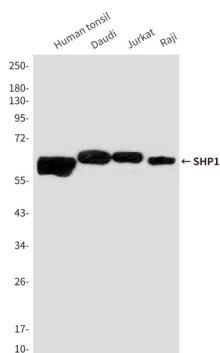
## Background

The protein encoded by this gene is a member of the protein tyrosine phosphatase (PTP) family. PTPs are known to be signaling molecules that regulate a variety of cellular processes including cell growth, differentiation, mitotic cycle, and oncogenic transformation.

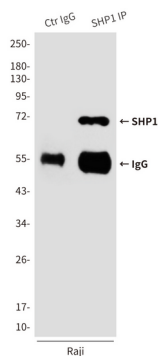
## Research Area

Jak-STAT signaling pathway

## Image Data



Western blot analysis of SHP1 in Human tonsil, Daudi, Jurkat and Raji lysates using SHP1 antibody.



Immunoprecipitation analysis of SHP1 in Raji lysates using SHP1 antibody.

## Note

For research use only.