

---

**Product Name: CD68 Mouse Monoclonal Antibody****Catalog #: AMM84990**

For research use only.

**Summary**

<b>Description</b>	Mouse monoclonal Antibody
<b>Host</b>	Mouse
<b>Application</b>	IHC,ICC
<b>Reactivity</b>	Human,Mouse
<b>Conjugation</b>	Unconjugated
<b>Modification</b>	Unmodified
<b>Isotype</b>	Mouse IgG1
<b>Clonality</b>	Monoclonal
<b>Form</b>	Liquid
<b>Concentration</b>	1mg/ml
<b>Storage</b>	Aliquot and store at -20°C (valid for 12 months). Avoid freeze/thaw cycles.
<b>Shipping</b>	Ice bags
<b>Buffer</b>	Purified antibody in PBS with 0.05% sodium azide,0.5%protective protein and 50% glycerol.
<b>Purification</b>	Affinity Purification

**Application**

<b>Dilution Ratio</b>	IHC 1:50-1:100,ICC 1:50-1:200
<b>Molecular Weight</b>	/

**Antigen Information**

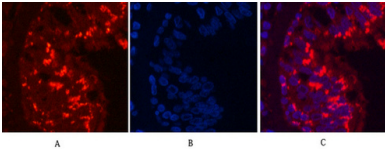
<b>Gene Name</b>	CD68
<b>Alternative Names</b>	CD68; Macrosialin; Gp110; CD68
<b>Gene ID</b>	968.0
<b>SwissProt ID</b>	P34810
<b>Immunogen</b>	Synthetic Peptide of CD68

**Background**

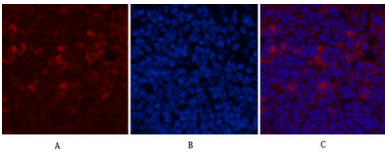
CD68 belongs to a family of acidic, highly glycosylated lysosomal glycoproteins (LGPs) that includes lamp-1 and lamp-2. Play a role in phagocytic activities of tissue macrophages, both in intracellular lysosomal metabolism and extracellular cell-cell and cell-pathogen interactions.

## Research Area

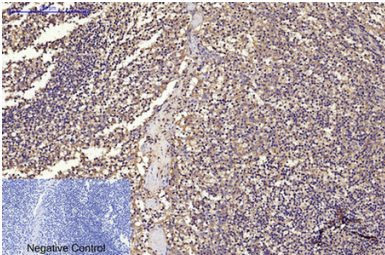
### Image Data



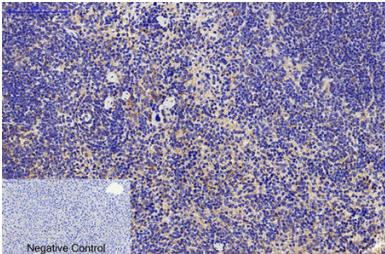
Immunofluorescence analysis of CD68 in Human lung cancer tissue using CD68 antibody (red) and DAPI (blue).



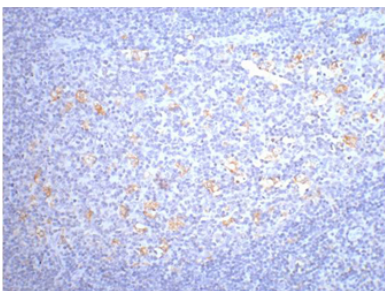
Immunofluorescence analysis of CD68 in mouse spleen tissue using CD68 antibody (6F3) (red), and DAPI (blue).



Immunohistochemistry analysis of paraffin-embedded Human Tonsil tissue using CD68 antibody. High-pressure and temperature Sodium Citrate pH 6.0 was used for antigen retrieval. Negative control was used by secondary antibody only.



Immunohistochemical analysis of paraffin-embedded Human tonsils using CD68 antibody. High-pressure and temperature Sodium Citrate pH 6.0 was used for antigen retrieval. Negative control was used by secondary antibody only.



Immunohistochemistry analysis of paraffin-embedded Human tonsil tissue using CD68 antibody. High-pressure and temperature Sodium Citrate pH 6.0 was used for antigen retrieval.