
Product Name: APG5L Mouse Monoclonal Antibody**Catalog #: AMM84984**

For research use only.

Summary

Description	Mouse monoclonal Antibody
Host	Mouse
Application	WB,IHC
Reactivity	Human,Mouse,Rat
Conjugation	Unconjugated
Modification	Unmodified
Isotype	Mouse IgG1
Clonality	Monoclonal
Form	Liquid
Concentration	1mg/ml
Storage	Aliquot and store at -20°C (valid for 12 months). Avoid freeze/thaw cycles.
Shipping	Ice bags
Buffer	Purified antibody in PBS with 0.05% sodium azide,0.5%protective protein and 50% glycerol.
Purification	Affinity Purification

Application

Dilution Ratio	WB 1:500-1:1000,IHC 1:50-1:100
Molecular Weight	Calculated MW: 32 kDa; Observed MW: 55 kDa

Antigen Information

Gene Name	APG5L
Alternative Names	APG 5L; APG5; APG5 autophagy 5 like; APG5 like; APG5-like; Apoptosis specific protein; ASP; ATG 5; ATG5 autophagy related 5 homolog; Autophagy protein 5; hAPG5
Gene ID	9474.0
SwissProt ID	Q9H1Y0
Immunogen	Purified recombinant protein expressed in E.coli.

Background

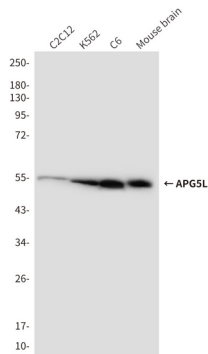
Required for autophagy. Conjugates to ATG12 and associates with isolation membrane to form cup-shaped isolation membrane and autophagosome. Involved in mitochondrial quality control after oxidative damage, and in subsequent cellular

longevity.

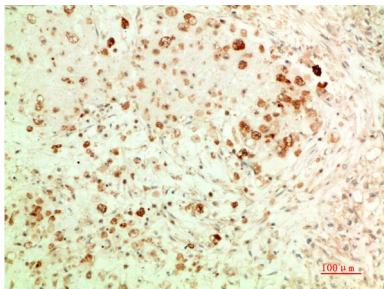
Research Area

Autophagy, Apoptosis

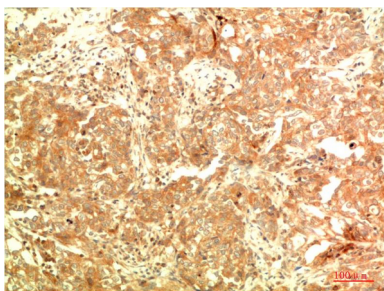
Image Data



Western blot analysis of APG5L in C2C12, K562, C6, mouse brain lysates using APG5L antibody



Immunohistochemistry analysis of paraffin-embedded Human Ovarian Carcinoma Tissue using APG5L antibody. High-pressure and temperature Sodium Citrate pH 6.0 was used for antigen retrieval.



Immunohistochemical analysis of paraffin-embedded Human tonsils using APG5L antibody. High-pressure and temperature Sodium Citrate pH 6.0 was used for antigen retrieval.