

---

**Product Name: TGF beta 1 Mouse Monoclonal Antibody****Catalog #: AMM84982**

For research use only.

**Summary**

|                      |   |
|----------------------|---|
| <b>Description</b>   | Mouse monoclonal Antibody   |
| <b>Host</b>          | Mouse   |
| <b>Application</b>   | WB,IHC  |
| <b>Reactivity</b>    | Human,Mouse,Rat   |
| <b>Conjugation</b>   | Unconjugated  |
| <b>Modification</b>  | Unmodified  |
| <b>Isotype</b>       | Mouse IgG1  |
| <b>Clonality</b>     | Monoclonal  |
| <b>Form</b>          | Liquid  |
| <b>Concentration</b> | 1mg/ml  |
| <b>Storage</b>       | Aliquot and store at -20°C (valid for 12 months). Avoid freeze/thaw cycles.               |
| <b>Shipping</b>      | Ice bags  |
| <b>Buffer</b>        | Purified antibody in PBS with 0.05% sodium azide,0.5%protective protein and 50% glycerol. |
| <b>Purification</b>  | Affinity Purification   |

**Application**

|                         |   |
|-------------------------|---|
| <b>Dilution Ratio</b>   | WB 1:500-1:1000,IHC 1:50-1:100                      |
| <b>Molecular Weight</b> | Calculated MW: 44 kDa; Observed MW: 12,25,45-65 kDa |

**Antigen Information**

|                          |                                      |
|--------------------------|--------------------------------------|
| <b>Gene Name</b>         | TGF beta 1                           |
| <b>Alternative Names</b> | TGF beta 1; TGFB; CED; LAP           |
| <b>Gene ID</b>           | 7040.0                               |
| <b>SwissProt ID</b>      | P01137                               |
| <b>Immunogen</b>         | Synthetic peptide conjugated to KLH. |

**Background**

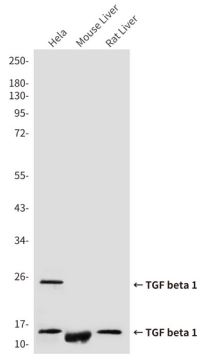
Multifunctional protein that controls proliferation, differentiation and other functions in many cell types. Many cells synthesize TGFβ1 and have specific receptors for it. It positively and negatively regulates many other growth factors. It plays an important role in bone remodeling as it is a potent stimulator of osteoblastic bone formation, causing chemotaxis, proliferation and

differentiation in committed osteoblasts.

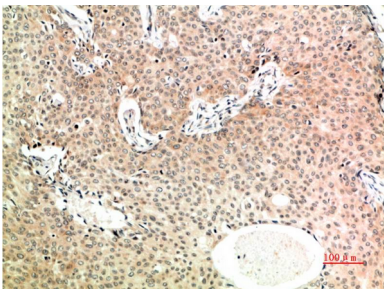
## Research Area

TGF-beta signaling pathway, MAPK signaling pathway

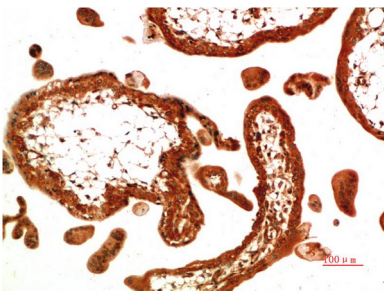
## Image Data



Western blot analysis of TGF beta 1 (8F6) in Hela lysates, mouse Liver lysates, rat Liver lysates using TGF&beta 1 antibody.



Immunohistochemistry analysis of paraffin-embedded Human Breast Carcinoma Tissue using TGF beta 1 antibody. High-pressure and temperature Sodium Citrate pH 6.0 was used for antigen retrieval.



Immunohistochemistry analysis of paraffin-embedded Human Placental Tissue using TGF beta 1 antibody. High-pressure and temperature Sodium Citrate pH 6.0 was used for antigen retrieval.