

Product Name: gamma Tubulin Mouse Monoclonal Antibody**Catalog #:** AMM84981

For research use only.

Summary

Description	Mouse monoclonal Antibody
Host	Mouse
Application	WB,IHC
Reactivity	Human,Mouse,Rat
Conjugation	Unconjugated
Modification	Unmodified
Isotype	Mouse IgG1
Clonality	Monoclonal
Form	Liquid
Concentration	1mg/ml
Storage	Aliquot and store at -20°C (valid for 12 months). Avoid freeze/thaw cycles.
Shipping	Ice bags
Buffer	Purified antibody in PBS with 0.05% sodium azide,0.5%protective protein and 50% glycerol.
Purification	Affinity Purification

Application

Dilution Ratio	WB 1:500-1:1000,IHC 1:50-1:100
Molecular Weight	Calculated MW: 51 kDa; Observed MW: 51 kDa

Antigen Information

Gene Name	gamma Tubulin
Alternative Names	TUBG1; TUBG; Tubulin gamma-1 chain; Gamma-1-tubulin; Gamma-tubulin complex component 1; GCP-1
Gene ID	7283.0
SwissProt ID	P23258
Immunogen	Synthetic peptide conjugated to KLH.

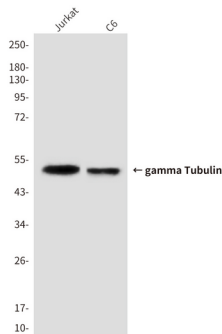
Background

TUBG1 Tubulin is the major constituent of microtubules. Gamma tubulin is found at microtubule organizing centers (MTOC) such as the spindle poles or the centrosome. Pericentriolar matrix component that regulates alpha/beta tubulin minus-end

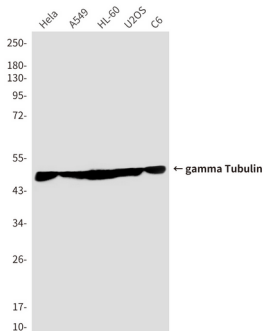
nucleation, centrosome duplication and spindle formation. Interacts with GCP2 and GCP3. Interacts with B9D2. Interacts with CDK5RAP2;

Research Area

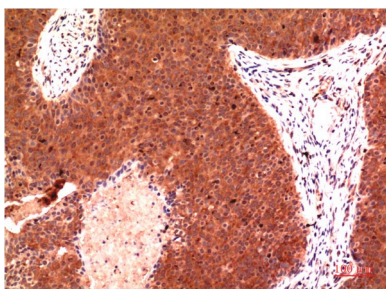
Image Data



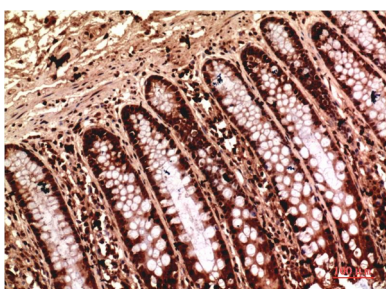
Western blot analysis of gamma Tubulin in Jurkat, C6 lysates using gamma Tubulin antibody



Western blot analysis of gamma Tubulin in HeLa, A549, HL-60, U2OS, C6 lysates using gamma Tubulin antibody.



Immunohistochemical analysis of paraffin-embedded Human tonsils using gamma Tubulin antibody. High-pressure and temperature Sodium Citrate pH 6.0 was used for antigen retrieval.



Immunohistochemistry analysis of paraffin-embedded Human Colon Carcinoma Tissue using gamma Tubulin antibody. High-pressure and temperature Sodium Citrate pH 6.0 was used for antigen retrieval.

