
Product Name: Rabbit IgG H&L Mouse Monoclonal Antibody**Catalog #: AMM84971**

For research use only.

Summary

Description	Mouse monoclonal Antibody
Host	Mouse
Application	WB
Reactivity	Rabbit
Conjugation	Unconjugated
Modification	Unmodified
Isotype	Mouse IgG1
Clonality	Monoclonal
Form	Liquid
Concentration	1mg/ml
Storage	Aliquot and store at -20°C (valid for 12 months). Avoid freeze/thaw cycles.
Shipping	Ice bags
Buffer	Purified antibody in PBS with 0.05% sodium azide, 0.5% protective protein and 50% glycerol.
Purification	Affinity Purification

Application

Dilution Ratio	WB 1:500-1:1000
Molecular Weight	Calculated MW: 25,55 kDa; Observed MW: 25,55 kDa

Antigen Information

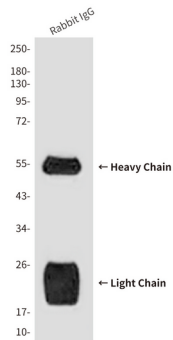
Gene Name	Rabbit IgG H&L
Alternative Names	Antibody; Ig gamma chain C region; Ig kappa-b4 chain C region; Ig kappa-b5 chain C region; Ig kappa-b9 chain C region; Ig lambda chain C region; K-BAS.
Gene ID	-
SwissProt ID	-
Immunogen	Recombinant Protein of Rabbit IgG (H+L)

Background

Constant region of immunoglobulin heavy chains. Immunoglobulins, also known as antibodies, are membrane-bound or secreted glycoproteins produced by B lymphocytes.

Research Area

Image Data



Western blot analysis of Reduced Rabbit IgG, H+L using Rabbit IgG H&L antibody.