

---

**Product Name: CD16 Mouse Monoclonal Antibody****Catalog #: AMM84968**

For research use only.

**Summary**

<b>Description</b>	Mouse monoclonal Antibody
<b>Host</b>	Mouse
<b>Application</b>	WB,IHC
<b>Reactivity</b>	Human
<b>Conjugation</b>	Unconjugated
<b>Modification</b>	Unmodified
<b>Isotype</b>	Mouse IgG1
<b>Clonality</b>	Monoclonal
<b>Form</b>	Liquid
<b>Concentration</b>	1mg/ml
<b>Storage</b>	Aliquot and store at -20°C (valid for 12 months). Avoid freeze/thaw cycles.
<b>Shipping</b>	Ice bags
<b>Buffer</b>	Purified antibody in PBS with 0.05% sodium azide,0.5%protective protein and 50% glycerol.
<b>Purification</b>	Affinity Purification

**Application**

<b>Dilution Ratio</b>	WB 1:500-1:1000,IHC 1:50-1:100
<b>Molecular Weight</b>	Calculated MW: 29 kDa; Observed MW: 45 kDa

**Antigen Information**

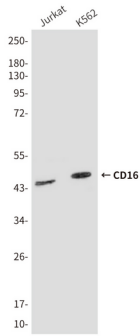
<b>Gene Name</b>	CD16
<b>Alternative Names</b>	IGFR3; CD16; CD16a; IMD20
<b>Gene ID</b>	2214.0
<b>SwissProt ID</b>	P08637
<b>Immunogen</b>	Synthetic Peptide of CD16

**Background**

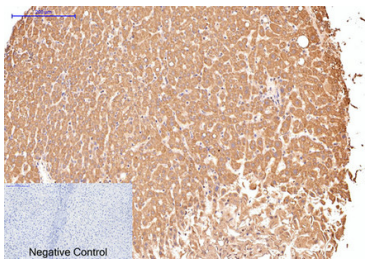
Receptor for the Fc region of IgG. Binds complexed or aggregated IgG and also monomeric IgG. Mediates antibody-dependent cellular cytotoxicity (ADCC) and other antibody-dependent responses, such as phagocytosis.

## Research Area

## Image Data



Western blot analysis of CD16 in Jurkat, K562 lysates using CD16 antibody



Immunohistochemistry analysis of paraffin-embedded Human liver tissue using CD16 antibody. High-pressure and temperature Sodium Citrate pH 6.0 was used for antigen retrieval. Negative control was used by secondary antibody only.