

**Product Name:** alpha Lactalbumin Mouse Monoclonal Antibody**Catalog #:** AMM84966

For research use only.

**Summary**

<b>Description</b>	Mouse monoclonal Antibody
<b>Host</b>	Mouse
<b>Application</b>	WB,IHC,ICC
<b>Reactivity</b>	Human
<b>Conjugation</b>	Unconjugated
<b>Modification</b>	Unmodified
<b>Isotype</b>	Mouse IgG1
<b>Clonality</b>	Monoclonal
<b>Form</b>	Liquid
<b>Concentration</b>	1mg/ml
<b>Storage</b>	Aliquot and store at -20°C (valid for 12 months). Avoid freeze/thaw cycles.
<b>Shipping</b>	Ice bags
<b>Buffer</b>	Purified antibody in PBS with 0.05% sodium azide,0.5%protective protein and 50% glycerol.
<b>Purification</b>	Affinity Purification

**Application**

<b>Dilution Ratio</b>	WB 1:500-1:1000,IHC 1:50-1:100,ICC 1:50-1:200
<b>Molecular Weight</b>	Calculated MW: 16 kDa; Observed MW: 16 kDa

**Antigen Information**

<b>Gene Name</b>	alpha Lactalbumin
<b>Alternative Names</b>	Lactose synthase B protein; Alpha-lactalbumin; Lactalbumin alpha; MGC138521
<b>Gene ID</b>	3906.0
<b>SwissProt ID</b>	P00709
<b>Immunogen</b>	Synthetic Peptide of alpha Lactalbumin

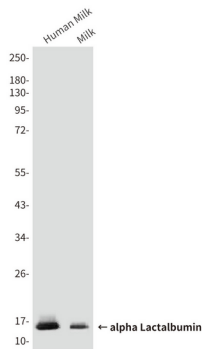
**Background**

Regulatory subunit of lactose synthase, changes the substrate specificity of galactosyltransferase in the mammary gland making glucose a good acceptor substrate for this enzyme. This enables LS to synthesize lactose, the major carbohydrate component of milk. In other tissues, galactosyltransferase transfers galactose onto the N-acetylglucosamine of the

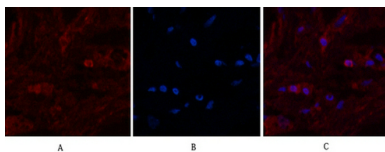
oligosaccharide chains in glycoproteins.

## Research Area

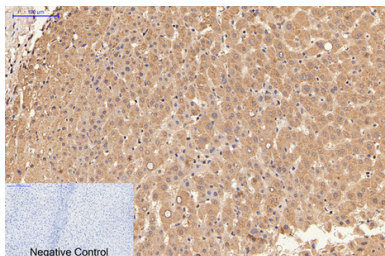
## Image Data



Western blot analysis of alpha Lactalbumin in Human Milk, Milk, lysates using alpha Lactalbumin antibody



Immunofluorescence analysis of alpha Lactalbumin in Human breast tissue using alpha Lactalbumin antibody (red), and DAPI (blue).



Immunohistochemistry analysis of paraffin-embedded Human liver tissue using alpha Lactalbumin antibody. High-pressure and temperature Sodium Citrate pH 6.0 was used for antigen retrieval. Negative control was used by secondary antibody only.