

Product Name: epsilon Tubulin Mouse Monoclonal Antibody**Catalog #: AMM84950**

For research use only.

Summary

Description	Mouse monoclonal Antibody
Host	Mouse
Application	IHC
Reactivity	Human,Mouse,Rat
Conjugation	Unconjugated
Modification	Unmodified
Isotype	Mouse IgG1
Clonality	Monoclonal
Form	Liquid
Concentration	1mg/ml
Storage	Aliquot and store at -20°C (valid for 12 months). Avoid freeze/thaw cycles.
Shipping	Ice bags
Buffer	Purified antibody in PBS with 0.05% sodium azide,0.5%protective protein and 50% glycerol.
Purification	Affinity Purification

Application

Dilution Ratio	IHC 1:50-1:100
Molecular Weight	/

Antigen Information

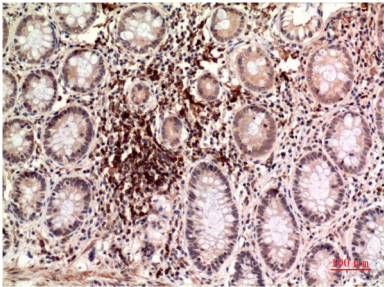
Gene Name	epsilon Tubulin
Alternative Names	FLJ22589; TUBE1; tubulin epsilon 1; ε tubulin
Gene ID	51175.0
SwissProt ID	Q9UJT0
Immunogen	Synthetic peptide conjugated to KLH.

Background

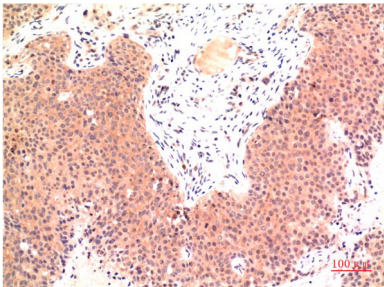
This gene encodes a member of the tubulin superfamily. This protein localizes to the centriolar sub-distal appendages that are associated with the older of the two centrioles after centrosome duplication. This protein plays a central role in organization of the microtubules during centriole duplication. A pseudogene of this gene is found on chromosome 5.

Research Area

Image Data



Immunohistochemistry analysis of paraffin-embedded Human Colon Carcinoma Tissue using epsilon Tubulin antibody. High-pressure and temperature Sodium Citrate pH 6.0 was used for antigen retrieval.



Immunohistochemical analysis of paraffin-embedded Human tonsils using epsilon Tubulin antibody. High-pressure and temperature Sodium Citrate pH 6.0 was used for antigen retrieval.