
Product Name: CD10 Mouse Monoclonal Antibody**Catalog #: AMM84945**

For research use only.

Summary

Description	Mouse monoclonal Antibody
Host	Mouse
Application	IHC
Reactivity	Human,Mouse,Rat
Conjugation	Unconjugated
Modification	Unmodified
Isotype	Mouse IgG1
Clonality	Monoclonal
Form	Liquid
Concentration	1mg/ml
Storage	Aliquot and store at -20°C (valid for 12 months). Avoid freeze/thaw cycles.
Shipping	Ice bags
Buffer	Purified antibody in PBS with 0.05% sodium azide,0.5%protective protein and 50% glycerol.
Purification	Affinity Purification

Application

Dilution Ratio	IHC 1:50-1:100
Molecular Weight	/

Antigen Information

Gene Name	CD10 MME; EPN; Neprilysin; Atriopeptidase; Common acute lymphocytic leukemia antigen;
Alternative Names	CALLA; Enkephalinase; Neutral endopeptidase 24.11; NEP; Neutral endopeptidase; Skin fibroblast elastase; SFE; CD10
Gene ID	4311.0
SwissProt ID	P08473
Immunogen	Synthetic peptide conjugated to KLH.

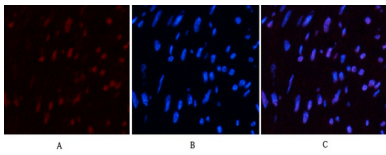
Background

CD10 is a transmembrane type II molecule and functions as a metallo-peptidase requiring zinc. Specifically, CD10 cleaves 1-3

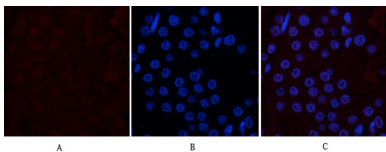
amino-terminal amino acids from peptides with a preference for neutral amino acids (valine, iso-leucine, phenylalanine, leucine or alanine). Involved in the degradation of atrial natriuretic factor (ANF). Displays UV-inducible elastase activity toward skin preelastic and elastic fibers.

Research Area

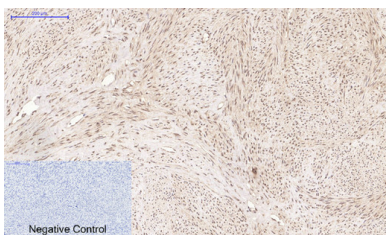
Image Data



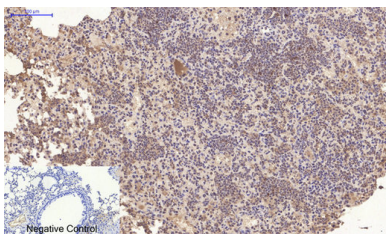
Immunofluorescence analysis of CD10 in Human uterus tissue using CD10 antibody(red),and DAPI (blue).



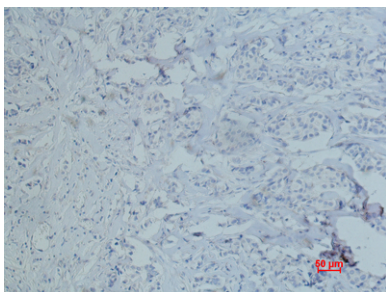
Immunofluorescence analysis of CD10 in rat kidney using CD10 antibody(red),and DAPI (blue).



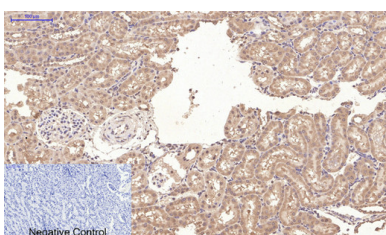
Immunohistochemistry analysis of paraffin-embedded Human uterus tissue using CD10 antibody. High-pressure and temperature Sodium Citrate pH 6.0 was used for antigen retrieval. Negative control was used by secondary antibody only.



Immunohistochemistry analysis of paraffin-embedded mouse lung tissue using CD10 antibody.High-pressure and temperature Sodium Citrate pH 6.0 was used for antigen retrieval.Negative control was used by secondary antibody only.



Immunohistochemistry analysis of paraffin-embedded Human breast cancer using CD10 antibody.High-pressure and temperature Sodium Citrate pH 6.0 was used for antigen retrieval.v



Immunohistochemistry analysis of paraffin-embedded rat kidney tissue using CD10 antibody.High-pressure and temperature Sodium Citrate pH 6.0 was used for antigen retrieval. Negative control was used by secondary antibody only.

