

---

**Product Name: CD5 Mouse Monoclonal Antibody****Catalog #: AMM84944**

For research use only.

**Summary**

<b>Description</b>	Mouse monoclonal Antibody
<b>Host</b>	Mouse
<b>Application</b>	IHC
<b>Reactivity</b>	Human,Mouse,Rat
<b>Conjugation</b>	Unconjugated
<b>Modification</b>	Unmodified
<b>Isotype</b>	Mouse IgG1
<b>Clonality</b>	Monoclonal
<b>Form</b>	Liquid
<b>Concentration</b>	1mg/ml
<b>Storage</b>	Aliquot and store at -20°C (valid for 12 months). Avoid freeze/thaw cycles.
<b>Shipping</b>	Ice bags
<b>Buffer</b>	Purified antibody in PBS with 0.05% sodium azide,0.5%protective protein and 50% glycerol.
<b>Purification</b>	Affinity Purification

**Application**

<b>Dilution Ratio</b>	IHC 1:50-1:100
<b>Molecular Weight</b>	/

**Antigen Information**

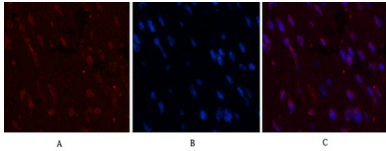
<b>Gene Name</b>	CD5
<b>Alternative Names</b>	CD5; LEU1; T-cell surface glycoprotein CD5; Lymphocyte antigen T1/Leu-1; CD antigen CD5
<b>Gene ID</b>	921.0
<b>SwissProt ID</b>	P06127
<b>Immunogen</b>	Synthetic peptide conjugated to KLH.

**Background**

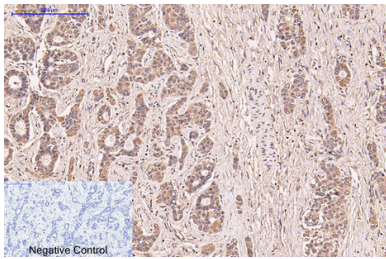
May act as a receptor in regulating T-cell proliferation. CD5 interacts with CD72/LYB-2.

**Research Area**

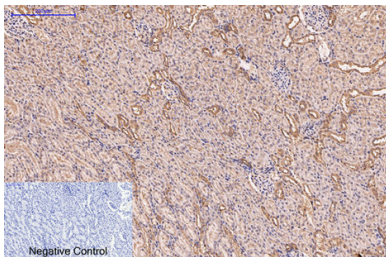
## Image Data



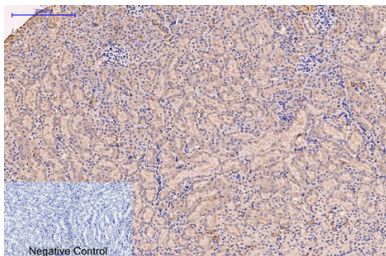
Immunofluorescence analysis of CD5 in mouse heart tissue using CD5 antibody(10G8)(red),and DAPI (blue).



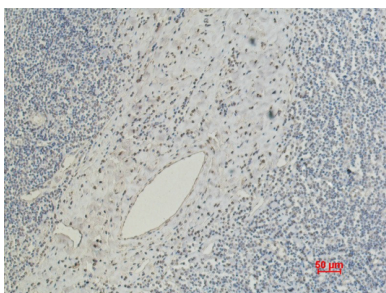
Immunohistochemistry analysis of paraffin-embedded Human livercancer tissue using CD5 antibody.High-pressure and temperature Sodium Citrate pH 6.0 was used for antigen retrieval.Negative control was used by secondary antibody only.



Immunohistochemical analysis of paraffin-embedded Human tonsils using CD5 antibody.High-pressure and temperature Sodium Citrate pH 6.0 was used for antigen retrieval.Negative control was used by secondary antibody only.



Immunohistochemistry analysis of paraffin-embedded mouse kidney tissue using CD5 antibody. High-pressure and temperature Sodium Citrate pH 6.0 was used for antigen retrieval. Negative control was used by secondary antibody only.



Immunohistochemistry analysis of paraffin-embedded Human Tonsil Carcinoma using CD5 antibody.High-pressure and temperature Sodium Citrate pH 6.0 was used for antigen retrieval.