
Product Name: Acetyl-Alpha Tubulin (Lys40) Mouse Monoclonal Antibody**Catalog #: AMM84825**

For research use only.

Summary

Description	Mouse monoclonal Antibody
Host	Mouse
Application	WB,IHC
Reactivity	Human,Mouse,Rat
Conjugation	Unconjugated
Modification	Acetylated
Isotype	Mouse IgG1
Clonality	Monoclonal
Form	Liquid
Concentration	1mg/ml
Storage	Aliquot and store at -20°C (valid for 12 months). Avoid freeze/thaw cycles.
Shipping	Ice bags
Buffer	Purified antibody in PBS with 0.05% sodium azide,0.5%protective protein and 50% glycerol.
Purification	Affinity Purification

Application

Dilution Ratio	WB 1:500-1:1000,IHC 1:50-1:100
Molecular Weight	Calculated MW: 50 kDa; Observed MW: 50 kDa

Antigen Information

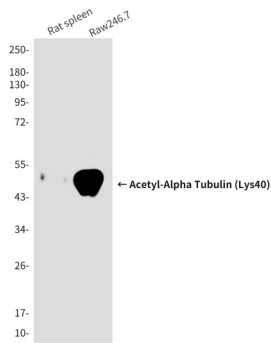
Gene Name	Acetyl-Alpha Tubulin (Lys40)
Alternative Names	alpha tubulin 2; B alpha 1; H2 alpha; Hum a tub 1; TUBA1; TUBA1A; Tubulin alpha 1chain
Gene ID	10376.0
SwissProt ID	P68363
Immunogen	Synthetic peptide conjugated to KLH.

Background

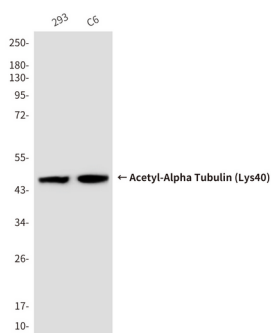
TUBA1A Tubulin is the major constituent of microtubules. It binds two moles of GTP, one at an exchangeable site on the beta chain and one at a non-exchangeable site on the alpha-chain.

Research Area

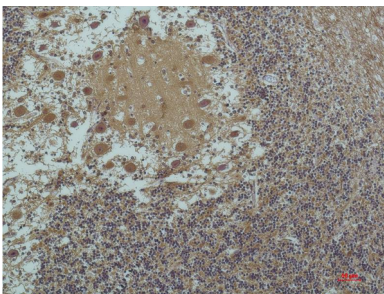
Image Data



Western blot analysis of Acetyl- α -Tubulin (Lys40) in rat spleen, Raw246.7 lysates using Acetyl- α -Tubulin (Lys40) antibody.



Western blot analysis of Acetyl- α -Tubulin (Lys40) in 293, C6 lysates using Acetyl- α -Tubulin (Lys40) antibody.



Immunohistochemistry analysis of paraffin-embedded Human Brain Tissue using α -tubulin (Acetyl Lys4) antibody. High-pressure and temperature Sodium Citrate pH 6.0 was used for antigen retrieval.