

---

**Product Name: HIP1 Mouse Monoclonal Antibody****Catalog #: AMM83626**

For research use only.

**Summary**

<b>Description</b>	Mouse monoclonal Antibody
<b>Host</b>	Mouse
<b>Application</b>	WB,IHC,IP
<b>Reactivity</b>	Human
<b>Conjugation</b>	Unconjugated
<b>Modification</b>	Unmodified
<b>Isotype</b>	Mouse IgG2a
<b>Clonality</b>	Monoclonal
<b>Form</b>	Liquid
<b>Concentration</b>	1mg/ml
<b>Storage</b>	Aliquot and store at -20°C (valid for 12 months). Avoid freeze/thaw cycles.
<b>Shipping</b>	Ice bags
<b>Buffer</b>	Purified antibody in PBS with 0.05% sodium azide
<b>Purification</b>	Affinity Purification

**Application**

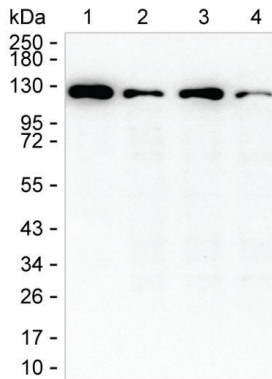
<b>Dilution Ratio</b>	WB 1:500-1:1000,IHC 1:100-1:200,IP 1:100-1:200
<b>Molecular Weight</b>	116.2kDa

**Antigen Information**

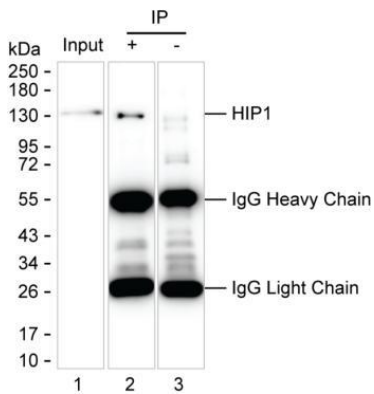
<b>Gene Name</b>	HIP1
<b>Alternative Names</b>	HIP1
<b>Gene ID</b>	
<b>SwissProt ID</b>	O00291
<b>Immunogen</b>	Purified recombinant fragment of human HIP1

**Background****Research Area**

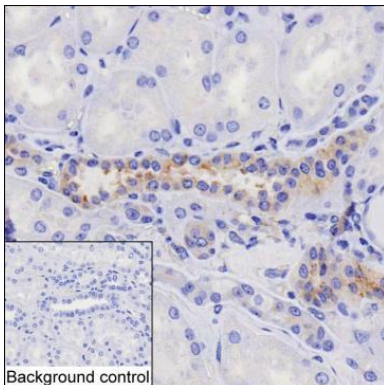
## Image Data



Lane 1: 15  $\mu$ g of A549 lysate; Lane 2: 15  $\mu$ g of HCT116 lysate; Lane 3: 15  $\mu$ g of HEK-293 lysate; Lane 4: 15  $\mu$ g of HeLa lysate; Result: HIP1 Mouse Monoclonal Antibody can detect HIP1 by Western blotting.



Lane 1: A549 lysate; Lane 2: HIP1 immunoprecipitated from A549 lysate by AMM83626; Lane 3: The same as Lane 2 but use IgG isotype control antibody; Result: AMM83626 can immunoprecipitate HIP1;



IHC-P analysis of kidney tissue by HIP1 antibody (AMM83626)