

---

**Product Name: IMMT Mouse Monoclonal Antibody****Catalog #: AMM83602**

For research use only.

**Summary**

<b>Description</b>	Mouse monoclonal Antibody
<b>Host</b>	Mouse
<b>Application</b>	WB,IHC,IP
<b>Reactivity</b>	Human
<b>Conjugation</b>	Unconjugated
<b>Modification</b>	Unmodified
<b>Isotype</b>	Mouse IgG1
<b>Clonality</b>	Monoclonal
<b>Form</b>	Liquid
<b>Concentration</b>	1mg/ml
<b>Storage</b>	Aliquot and store at -20°C (valid for 12 months). Avoid freeze/thaw cycles.
<b>Shipping</b>	Ice bags
<b>Buffer</b>	Purified antibody in PBS with 0.05% sodium azide
<b>Purification</b>	Affinity Purification

**Application**

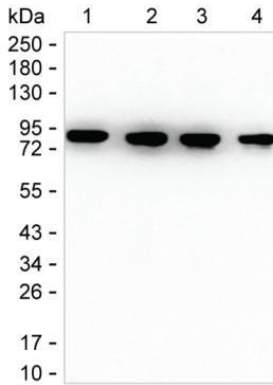
<b>Dilution Ratio</b>	WB 1:500-1:1000,IHC 1:100-1:200,IP 1:100-1:200
<b>Molecular Weight</b>	Calculated MW: 84 kDa; Observed MW: 84 kDa

**Antigen Information**

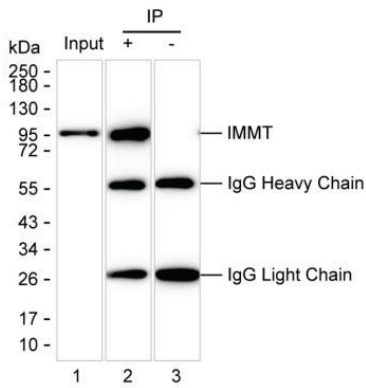
<b>Gene Name</b>	IMMT
<b>Alternative Names</b>	IMMT
<b>Gene ID</b>	
<b>SwissProt ID</b>	Q16891
<b>Immunogen</b>	Purified recombinant fragment of human IMMT

**Background****Research Area**

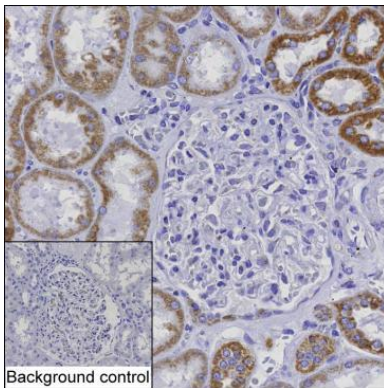
## Image Data



Lane 1: 15  $\mu$ g of MCF7 lysate; Lane 2: 15  $\mu$ g of HeLa lysate; Lane 3: 15  $\mu$ g of HEK-293 lysate; Lane 4: 15  $\mu$ g of Raji lysate; Result: IMMT Mouse Monoclonal Antibody can detect IMMT by Western blotting.



Lane 1: MCF7 lysate; Lane 2: IMMT immunoprecipitated from MCF7 lysate by AMM83602; Lane 3: The same as Lane 2 but use IgG isotype control antibody; Result: AMM83602 can immunoprecipitate IMMT;



IHC-P analysis of kidney tissue by IMMT antibody (AMM83602)