

---

**Product Name: PSMD1 Mouse Monoclonal Antibody****Catalog #: AMM83176**

For research use only.

**Summary**

<b>Description</b>	Mouse monoclonal Antibody
<b>Host</b>	Mouse
<b>Application</b>	WB,IP
<b>Reactivity</b>	Human
<b>Conjugation</b>	Unconjugated
<b>Modification</b>	Unmodified
<b>Isotype</b>	Mouse IgG1
<b>Clonality</b>	Monoclonal
<b>Form</b>	Liquid
<b>Concentration</b>	1mg/ml
<b>Storage</b>	Aliquot and store at -20°C (valid for 12 months). Avoid freeze/thaw cycles.
<b>Shipping</b>	Ice bags
<b>Buffer</b>	Purified antibody in PBS with 0.05% sodium azide
<b>Purification</b>	Affinity Purification

**Application**

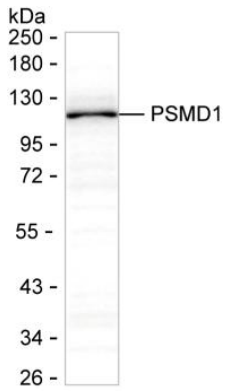
<b>Dilution Ratio</b>	WB 1:500-1:1000,IP 1:100-1:200
<b>Molecular Weight</b>	105.8kDa

**Antigen Information**

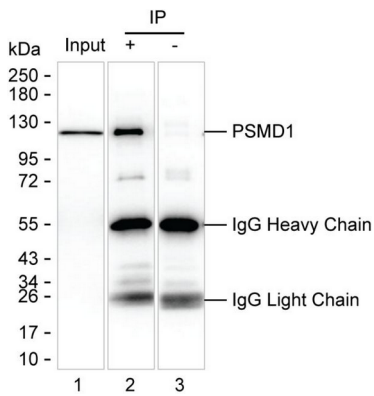
<b>Gene Name</b>	PSMD1
<b>Alternative Names</b>	PSMD1
<b>Gene ID</b>	
<b>SwissProt ID</b>	Q99460
<b>Immunogen</b>	Purified recombinant fragment of human PSMD1

**Background****Research Area**

## Image Data



Western blot analysis using PSMD1 mouse mAb against A-431 lysate



Lane 1: Hep G2 lysate ; Lane 2: PSMD1 immunoprecipitated from Hep G2 lysate by AMM83176 ; Lane 3: The same as Lane 2 but use IgG isotype control antibody ;Result: AMM83176 can immunoprecipitate PSMD1;