

Product Name: WHSC2 Mouse Monoclonal Antibody**Catalog #: AMM83064**

For research use only.

Summary

Description	Mouse monoclonal Antibody
Host	Mouse
Application	WB,IHC,ICC,ELISA,FC
Reactivity	Human
Conjugation	Unconjugated
Modification	Unmodified
Isotype	Mouse IgG2b
Clonality	Monoclonal
Form	Liquid
Concentration	1mg/ml
Storage	Aliquot and store at -20°C (valid for 12 months). Avoid freeze/thaw cycles.
Shipping	Ice bags
Buffer	PBS containing 0.03% sodium azide.
Purification	Affinity Purification

Application

Dilution Ratio	WB 1:500-1:2000,IHC 1:200-1:1000,ICC 1:200-1:1000,ELISA 1:5000-1:20000,FC 1:200-1:400
Molecular Weight	57.3kDa

Antigen Information

Gene Name	WHSC2
Alternative Names	NELFA; NELF-A; P/OKcl.15
Gene ID	7469.0
SwissProt ID	Q9H3P2
Immunogen	Purified recombinant fragment of human WHSC2 (AA: 280-511) expressed in E. Coli.

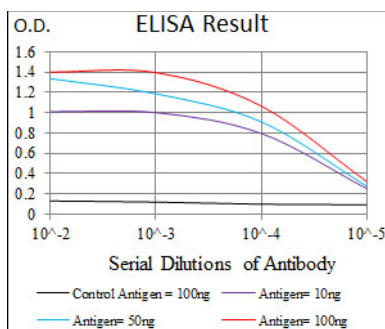
Background

This gene is expressed ubiquitously with higher levels in fetal than in adult tissues. It encodes a protein sharing 93% sequence identity with the mouse protein. Wolf-Hirschhorn syndrome (WHS) is a malformation syndrome associated with a hemizygous deletion of the distal short arm of chromosome 4. This gene is mapped to the 165 kb WHS critical region, and may play a role in

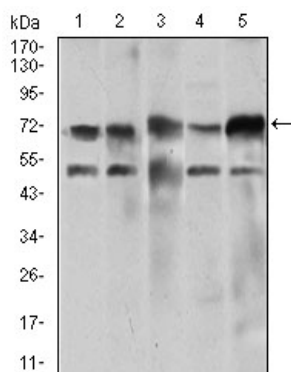
the phenotype of the WHS or Pitt-Rogers-Danks syndrome. The encoded protein is found to be capable of reacting with HLA-A2-restricted and tumor-specific cytotoxic T lymphocytes, suggesting a target for use in specific immunotherapy for a large number of cancer patients. This protein has also been shown to be a member of the NELF (negative elongation factor) protein complex that participates in the regulation of RNA polymerase II transcription elongation.

Research Area

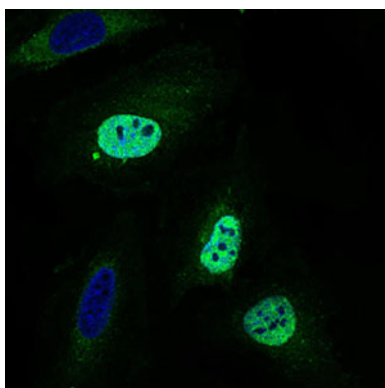
Image Data



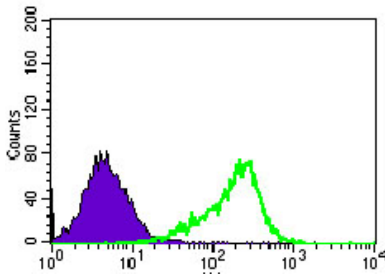
Red: Control Antigen (100ng), Purple Antigen (10ng), Green Antigen (50ng) Blue: Antigen (100ng),



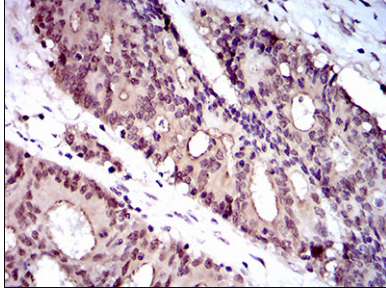
Western blot analysis using HSC2 mouse mAb against Jurkat (1) HeLa (2), HEK293 (3), 4549 (4) and SPC-4-1 (5) cell lysate.



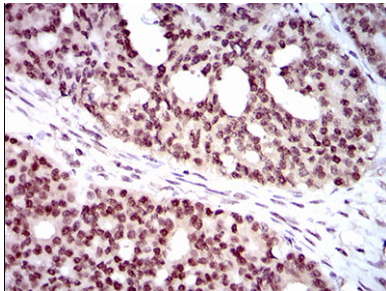
Immunofluorescence analysis of HeLa cells using HSC2 mouse mAb (green). Blue: DAPI fluorescent dye.



Flow cytometric analysis of HEK293 cells using WHSC2 mouse mAb (green) and negative control (purple).



Immunohistochemical analysis of paraffin-embedded colon cancer tissues using WHSC2 mouse mAb with DAB staining.



Immunohistochemical analysis of paraffin-embedded ovarian cancer tissues using WHSC2 mouse mAb with DAB staining.