

**Product Name: RPL18A Mouse Monoclonal Antibody****Catalog #: AMM83061**

For research use only.

**Summary**

<b>Description</b>	Mouse monoclonal Antibody
<b>Host</b>	Mouse
<b>Application</b>	WB,IHC,ELISA
<b>Reactivity</b>	Human,Mouse
<b>Conjugation</b>	Unconjugated
<b>Modification</b>	Unmodified
<b>Isotype</b>	Mouse IgG1
<b>Clonality</b>	Monoclonal
<b>Form</b>	Liquid
<b>Concentration</b>	1mg/ml
<b>Storage</b>	Aliquot and store at -20°C (valid for 12 months). Avoid freeze/thaw cycles.
<b>Shipping</b>	Ice bags
<b>Buffer</b>	Purified antibody in PBS with 0.05% sodium azide
<b>Purification</b>	Affinity Purification

**Application**

<b>Dilution Ratio</b>	WB 1:500-1:2000,IHC 1:200-1:1000,ELISA 1:5000-1:20000
<b>Molecular Weight</b>	20.8kDa

**Antigen Information**

<b>Gene Name</b>	RPL18A
<b>Alternative Names</b>	L18A
<b>Gene ID</b>	6142.0
<b>SwissProt ID</b>	Q02543
<b>Immunogen</b>	Purified recombinant fragment of human RPL18A (AA: 50-176) expressed in E. Coli.

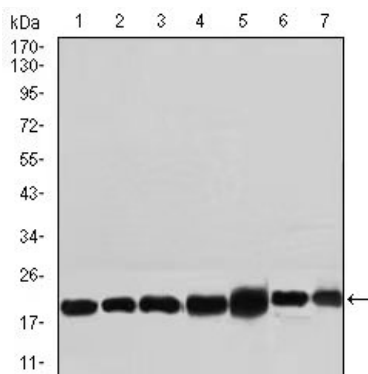
**Background**

Ribosomes, the organelles that catalyze protein synthesis, consist of a small 40S subunit and a large 60S subunit. Together these subunits are composed of 4 RNA species and approximately 80 structurally distinct proteins. This gene encodes a member of the L18AE family of ribosomal proteins that is a component of the 60S subunit. The encoded protein may play a role

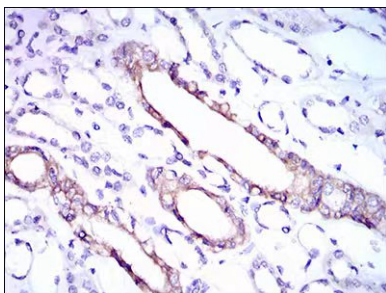
in viral replication by interacting with the hepatitis C virus internal ribosome entry site (IRES). This gene is co-transcribed with the U68 snoRNA, located within the third intron. As is typical for genes encoding ribosomal proteins, there are multiple processed pseudogenes of this gene dispersed throughout the genome.

## Research Area

### Image Data



Western blot analysis using RPL18A mouse mAb against NIH3T3(1), HEK293 (2), HL60 (3), Jurkat (4)Raji (5), MOLT4 (6), and HeLa (7) celllysate.



Immunohistochemical analysis of paraffin-embedded kidney tissues using RPL18A mouse mAb with DAB staining