

**Product Name: FCER1A Mouse Monoclonal Antibody****Catalog #: AMM83051**

For research use only.

**Summary**

<b>Description</b>	Mouse monoclonal Antibody
<b>Host</b>	Mouse
<b>Application</b>	WB,ELISA,FC
<b>Reactivity</b>	Human
<b>Conjugation</b>	Unconjugated
<b>Modification</b>	Unmodified
<b>Isotype</b>	Mouse IgG1
<b>Clonality</b>	Monoclonal
<b>Form</b>	Liquid
<b>Concentration</b>	1mg/ml
<b>Storage</b>	Aliquot and store at -20°C (valid for 12 months). Avoid freeze/thaw cycles.
<b>Shipping</b>	Ice bags
<b>Buffer</b>	Purified antibody in PBS with 0.05% sodium azide
<b>Purification</b>	Affinity Purification

**Application**

<b>Dilution Ratio</b>	WB 1:500-1:2000,ELISA 1:5000-1:20000,FC 1:200-1:400
<b>Molecular Weight</b>	29.6kDa

**Antigen Information**

<b>Gene Name</b>	FCER1A
<b>Alternative Names</b>	FCE1A; FcERI
<b>Gene ID</b>	2205.0
<b>SwissProt ID</b>	P12319
<b>Immunogen</b>	Purified recombinant fragment of human FCER1A (AA: 42-103) expressed in E. Coli.

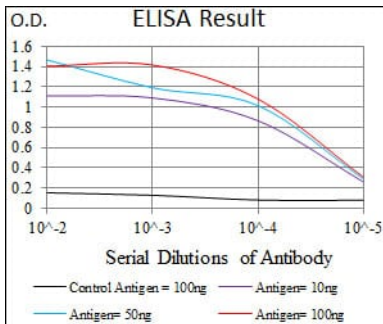
**Background**

The immunoglobulin epsilon receptor (IgE receptor) is the initiator of the allergic response. When two or more high-affinity IgE receptors are brought together by allergen-bound IgE molecules, mediators such as histamine that are responsible for allergy symptoms are released. This receptor is comprised of an alpha subunit, a beta subunit, and two gamma subunits. The protein

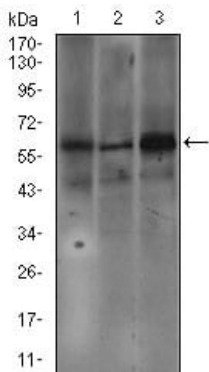
encoded by this gene represents the alpha subunit.

## Research Area

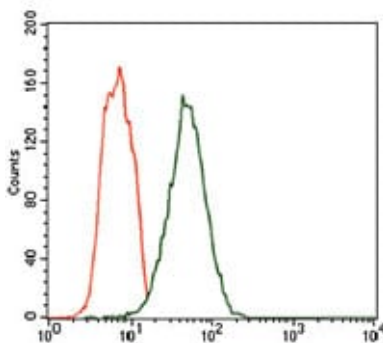
## Image Data



Black line: Control Antigen (100 ng); Purple line: Antigen(10ng); Blue line: Antigen (50 ng); Red line: Antigen (100 ng);



Western blot analysis using FCER1A mouse mAb against SW620 (1), A549 (2), and A431 (3) cell lysate.



Flow cytometric analysis of HEK293 cells using FCER1A mouse mAb (green) and negative control (red).