

---

**Product Name: FCER1A Mouse Monoclonal Antibody****Catalog #: AMM83050**

For research use only.

**Summary**

<b>Description</b>	Mouse monoclonal Antibody
<b>Host</b>	Mouse
<b>Application</b>	WB,ELISA,FC
<b>Reactivity</b>	Human,Mouse
<b>Conjugation</b>	Unconjugated
<b>Modification</b>	Unmodified
<b>Isotype</b>	Mouse IgG1
<b>Clonality</b>	Monoclonal
<b>Form</b>	Liquid
<b>Concentration</b>	1mg/ml
<b>Storage</b>	Aliquot and store at -20°C (valid for 12 months). Avoid freeze/thaw cycles.
<b>Shipping</b>	Ice bags
<b>Buffer</b>	PBS containing 0.03% sodium azide.
<b>Purification</b>	Affinity Purification

**Application**

<b>Dilution Ratio</b>	WB 1:500-1:2000,ELISA 1:5000-1:20000,FC 1:200-1:400
<b>Molecular Weight</b>	29.6kDa

**Antigen Information**

<b>Gene Name</b>	FCER1A
<b>Alternative Names</b>	FCE1A; FcERI
<b>Gene ID</b>	2205.0
<b>SwissProt ID</b>	P12319
<b>Immunogen</b>	Purified recombinant fragment of human FCER1A (AA:42-103) expressed in E. Coli.

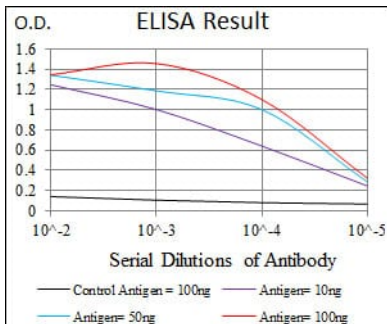
**Background**

The immunoglobulin epsilon receptor (IgE receptor) is the initiator of the allergic response. When two or more high-affinity IgE receptors are brought together by allergen-bound IgE molecules, mediators such as histamine that are responsible for allergy symptoms are released. This receptor is comprised of an alpha subunit, a beta subunit, and two gamma subunits. The protein

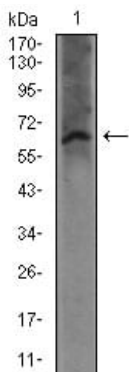
encoded by this gene represents the alpha subunit.

## Research Area

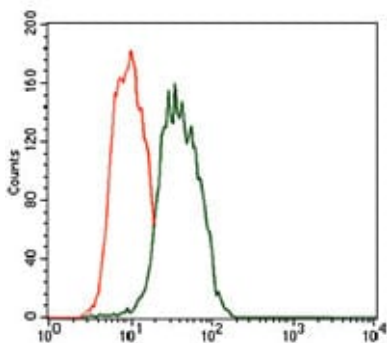
## Image Data



Black line: Control Antigen (100 ng); Purple line: Antigen(10ng); Blue line: Antigen (50 ng); Red line: Antigen (100 ng);



Western blot analysis using FCER1A mouse mAb against mouse kidney tissue lysate.



Flow cytometric analysis of HEK293 cells using FCER1A mouse mAb (green) and negative control (red).