

Summary

Production Name	ATM Mouse Monoclonal Antibody
Description	Mouse Monoclonal Antibody
Host	Mouse
Application	IHC, ICC, FC, ELISA
Reactivity	Human, Mouse, Monkey, Rat

Performance

Conjugation	Unconjugated
Modification	Unmodified
Isotype	Mouse IgG2b
Clonality	Monoclonal
Form	Liquid
Storage	Store at 4°C short term. Aliquot and store at -20°C long term. Avoid freeze/thaw cycles.
Buffer	Purified antibody in PBS with 0.05% sodium azide
Purification	Affinity Purification

Immunogen

Gene Name	ATM
Alternative Names	AT1; ATA; ATC; ATD; ATE; ATDC; TEL1; TELO1
Gene ID	472.0
SwissProt ID	Q13315. Purified recombinant fragment of human ATM (AA: 2577-3056) expressed in E. Coli.

Application

Dilution Ratio	IHC:1:200-1:1000, ICC:1:200-1:1000, FC:1:200-1:400, ELISA:1:10000
Molecular Weight	350.7kDa

Background

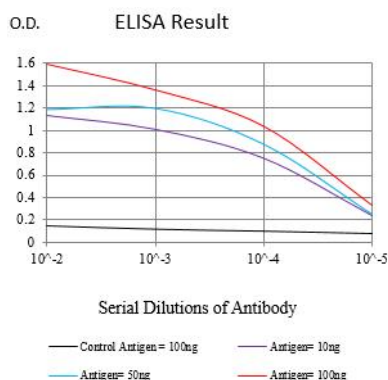
Product Name: ATM Mouse Monoclonal Antibody
Catalog #: AMM82984



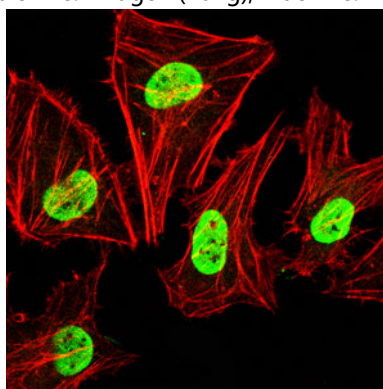
The protein encoded by this gene belongs to the PI3/PI4-kinase family. This protein is an important cell cycle checkpoint kinase that phosphorylates; thus, it functions as a regulator of a wide variety of downstream proteins, including tumor suppressor proteins p53 and BRCA1, checkpoint kinase CHK2, checkpoint proteins RAD17 and RAD9, and DNA repair protein NBS1. This protein and the closely related kinase ATR are thought to be master controllers of cell cycle checkpoint signaling pathways that are required for cell response to DNA damage and for genome stability. Mutations in this gene are associated with ataxia telangiectasia, an autosomal recessive disorder.

Research Area

Image Data

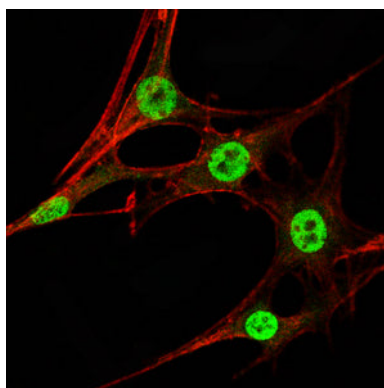


Black line: Control Antigen (100 ng);Purple line: Antigen (10ng); Blue line: Antigen (50 ng); Red line:Antigen (100 ng)

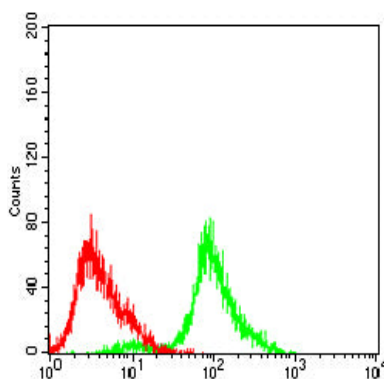


Immunofluorescence analysis of HeLa cells using ATM mouse mAb (green). Blue: DRAQ5 fluorescent DNA dye. Red: Actin filaments have been labeled with Alexa Fluor- 555 phalloidin. Secondary antibody from Fisher (Cat#: 35503)

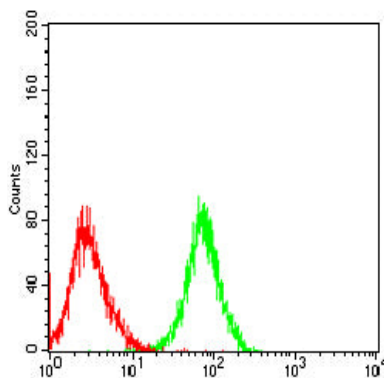
Product Name: ATM Mouse Monoclonal Antibody
Catalog #: AMM82984



Immunofluorescence analysis of NIH/3T3 cells using ATM mouse mAb (green). Blue: DRAQ5 fluorescent DNA dye. Red: Actin filaments have been labeled with Alexa Fluor- 555 phalloidin. Secondary antibody from Fisher (Cat#: 35503)

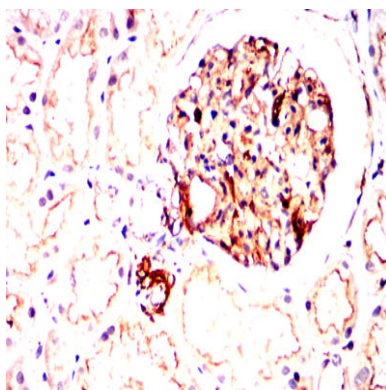


Flow cytometric analysis of HeLa cells using ATM mouse mAb (green) and negative control (red).

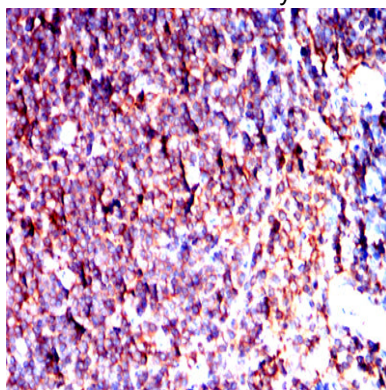


Flow cytometric analysis of COS-7 cells using ATM mouse mAb (green) and negative control (red).

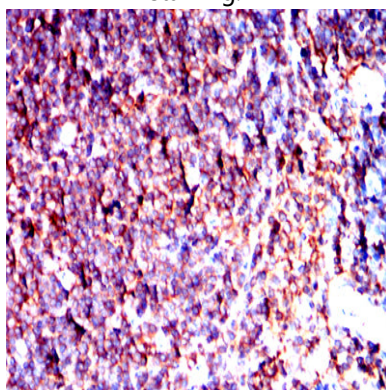
Product Name: ATM Mouse Monoclonal Antibody
Catalog #: AMM82984



Immunohistochemical analysis of paraffin-embedded human kidney tissues using ATM mouse mAb with DAB staining.

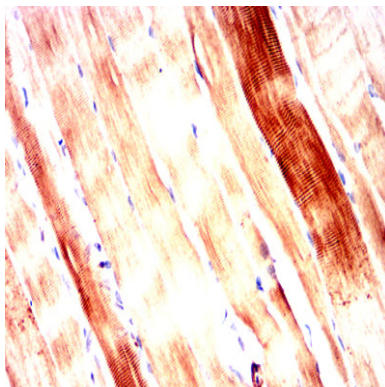


Immunohistochemical analysis of paraffin-embedded human gastric cancer tissues using ATM mouse mAb with DAB staining.



Immunohistochemical analysis of paraffin-embedded Mouse spleen tissues using ATM mouse mAb with DAB staining.

Product Name: ATM Mouse Monoclonal Antibody
Catalog #: AMM82984



Immunohistochemical analysis of paraffin-embedded Rat myocardium tissues using ATM mouse mAb with DAB staining.

Note

For research use only.