
Product Name: FSHB Mouse Monoclonal Antibody**Catalog #: AMM82978**

For research use only.

Summary

Description	Mouse monoclonal Antibody
Host	Mouse
Application	IHC,ELISA,FC
Reactivity	Human
Conjugation	Unconjugated
Modification	Unmodified
Isotype	Mouse IgG2a
Clonality	Monoclonal
Form	Liquid
Concentration	1mg/ml
Storage	Aliquot and store at -20°C (valid for 12 months). Avoid freeze/thaw cycles.
Shipping	Ice bags
Buffer	Purified antibody in PBS with 0.05% sodium azide
Purification	Affinity Purification

Application

Dilution Ratio	IHC 1:200-1:1000,ELISA 1:5000-1:20000,FC 1:200-1:400
Molecular Weight	14.7kDa

Antigen Information

Gene Name	FSHB
Alternative Names	HH24
Gene ID	2488.0
SwissProt ID	P01225
Immunogen	Purified recombinant fragment of human FSHB (AA: 2x 19-129) expressed in E. Coli.

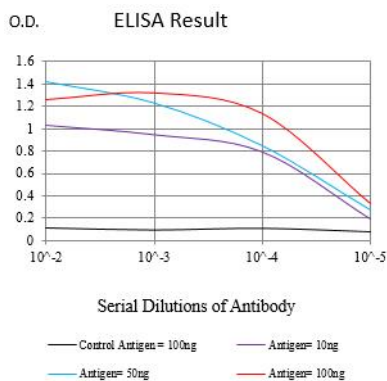
Background

The pituitary glycoprotein hormone family includes follicle-stimulating hormone, luteinizing hormone, chorionic gonadotropin, and thyroid-stimulating hormone. All of these glycoproteins consist of an identical alpha subunit and a hormone-specific beta subunit. This gene encodes the beta subunit of follicle-stimulating hormone. In conjunction with

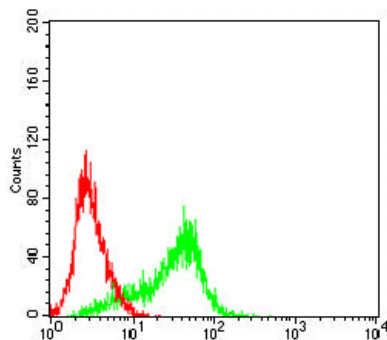
lutinizing hormone, follicle-stimulating hormone induces egg and sperm production. Alternative splicing results in two transcript variants encoding the same protein.

Research Area

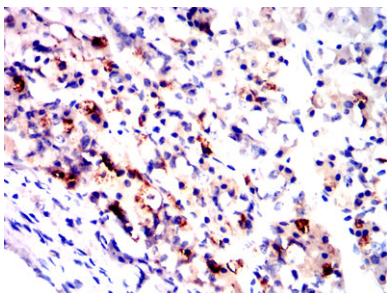
Image Data



Black line: Control Antigen (100 ng);Purple line: Antigen (10ng); Blue line: Antigen (50 ng); Red line:Antigen (100 ng)



Flow cytometric analysis of HeLa cells using FSHB mouse mAb (green) and negative control (red).



Immunohistochemical analysis of paraffin-embedded human hypophysis tissues using FSHB mouse mAb with DAB staining.