
Product Name: NOTCH4 Mouse Monoclonal Antibody**Catalog #: AMM82977**

For research use only.

Summary

| | |
|----------------------|---|
| Description | Mouse monoclonal Antibody |
| Host | Mouse |
| Application | IHC,ELISA,FC |
| Reactivity | Human |
| Conjugation | Unconjugated |
| Modification | Unmodified |
| Isotype | Mouse IgG2a |
| Clonality | Monoclonal |
| Form | Liquid |
| Concentration | 1mg/ml |
| Storage | Aliquot and store at -20°C (valid for 12 months). Avoid freeze/thaw cycles. |
| Shipping | Ice bags |
| Buffer | Purified antibody in PBS with 0.05% sodium azide |
| Purification | Affinity Purification |

Application

| | |
|-------------------------|--|
| Dilution Ratio | IHC 1:200-1:1000,ELISA 1:5000-1:20000,FC 1:200-1:400 |
| Molecular Weight | 209.6kDa |

Antigen Information

| | |
|--------------------------|---|
| Gene Name | NOTCH4 |
| Alternative Names | INT3 |
| Gene ID | 4855.0 |
| SwissProt ID | Q99466 |
| Immunogen | Purified recombinant fragment of human NOTCH4 (AA: extra 118-357) expressed in E. Coli. |

Background

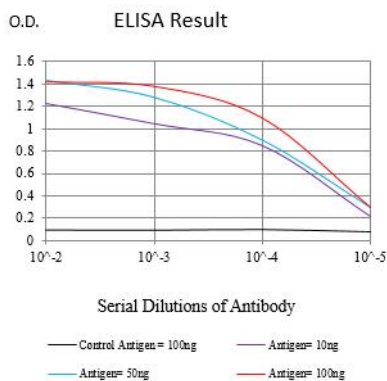
This gene encodes a member of the NOTCH family of proteins. Members of this Type I transmembrane protein family share structural characteristics including an extracellular domain consisting of multiple epidermal growth factor-like (EGF) repeats, and an intracellular domain consisting of multiple different domain types. Notch signaling is an evolutionarily conserved

intercellular signaling pathway that regulates interactions between physically adjacent cells through binding of Notch family receptors to their cognate ligands. The encoded preproprotein is proteolytically processed in the trans-Golgi network to generate two polypeptide chains that heterodimerize to form the mature cell-surface receptor. This receptor may play a role in vascular, renal and hepatic development. Mutations in this gene may be associated with schizophrenia. Alternative splicing results in multiple transcript variants, at least one of which encodes an isoform that is proteolytically processed.

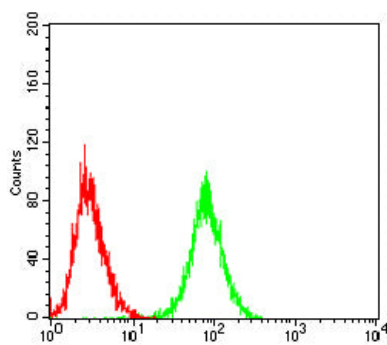
Research Area

Notch signaling pathway

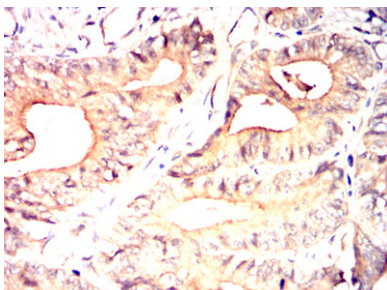
Image Data



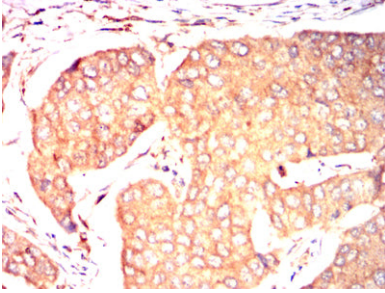
Black line: Control Antigen (100 ng);Purple line: Antigen (10ng); Blue line: Antigen (50 ng); Red line:Antigen (100 ng)



Flow cytometric analysis of Hela cells using NOTCH4 mouse mAb (green) and negative control (red).



Immunohistochemical analysis of paraffin-embedded human colon cancer tissues using NOTCH4 mouse mAb with DAB staining.



Immunohistochemical analysis of paraffin-embedded human breast cancer tissues using NOTCH4 mouse mAb with DAB staining.