

**Product Name: ZP2 Mouse Monoclonal Antibody**  
**Catalog #: AMM82967**



## Summary

<b>Production Name</b>	ZP2 Mouse Monoclonal Antibody
<b>Description</b>	Mouse Monoclonal Antibody
<b>Host</b>	Mouse
<b>Application</b>	IHC,FC,ELISA
<b>Reactivity</b>	Human, Mouse, Rat

## Performance

<b>Conjugation</b>	Unconjugated
<b>Modification</b>	Unmodified
<b>Isotype</b>	Mouse IgG1
<b>Clonality</b>	Monoclonal
<b>Form</b>	Liquid
<b>Storage</b>	Store at 4°C short term. Aliquot and store at -20°C long term. Avoid freeze/thaw cycles.
<b>Buffer</b>	Purified antibody in PBS with 0.05% sodium azide
<b>Purification</b>	Affinity Purification

## Immunogen

<b>Gene Name</b>	ZP2
<b>Alternative Names</b>	ZPA; Zp-2; OOMD6
<b>Gene ID</b>	7783.0
<b>SwissProt ID</b>	Q05996 .Purified recombinant fragment of human ZP2 (AA: 624-745) expressed in E. Coli.

## Application

<b>Dilution Ratio</b>	IHC:1:200-1:1000,FC:1:200-1:400,ELISA:1:10000
<b>Molecular Weight</b>	82.3kDa

## Background

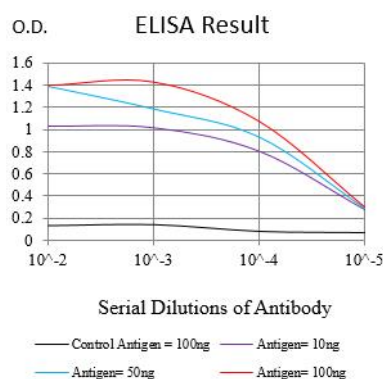
**Product Name: ZP2 Mouse Monoclonal Antibody**  
**Catalog #: AMM82967**



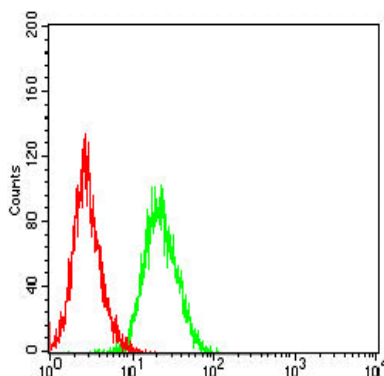
The zona pellucida is an extracellular matrix that surrounds the oocyte and early embryo. It is composed of three glycoproteins with various functions during fertilization and preimplantation development. The glycosylated mature peptide is one of the structural components of the zona pellucida and functions in secondary binding and penetration of acrosome-reacted spermatozoa. Female mice lacking this gene do not form a stable zona matrix and are sterile. Alternative splicing results in multiple transcript variants.

## Research Area

## Image Data



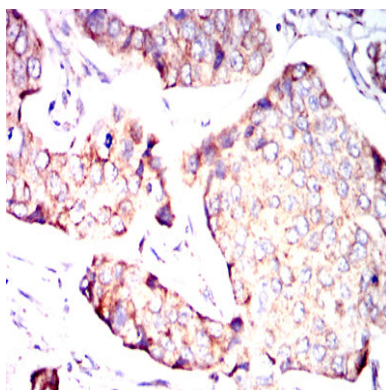
Black line: Control Antigen (100 ng);Purple line: Antigen (10ng); Blue line: Antigen (50 ng); Red line:Antigen (100 ng)



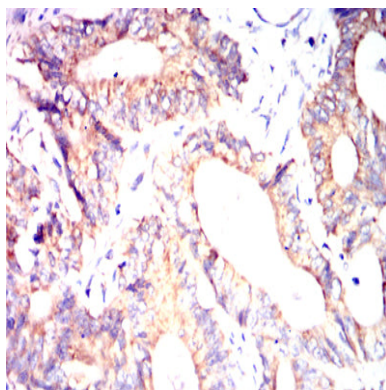
Flow cytometric analysis of Hela cells using ZP2 mouse mAb (green) and negative control (red).

**Product Name: ZP2 Mouse Monoclonal Antibody**  
**Catalog #: AMM82967**

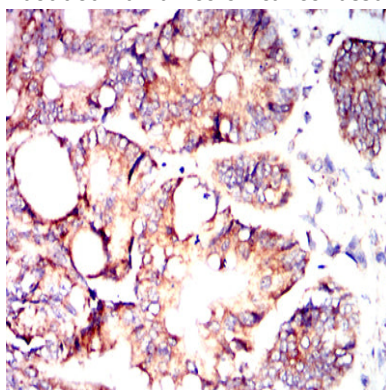
---



Immunohistochemical analysis of paraffin-embedded human breast cancer tissues using ZP2 mouse mAb with DAB staining.

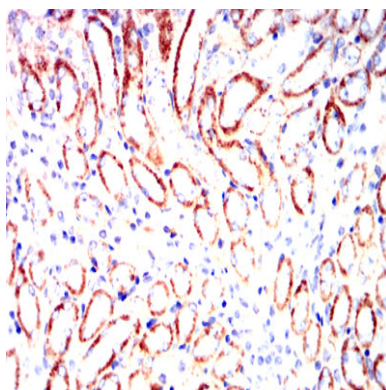


Immunohistochemical analysis of paraffin-embedded human colon cancer tissues using ZP2 mouse mAb with DAB staining.

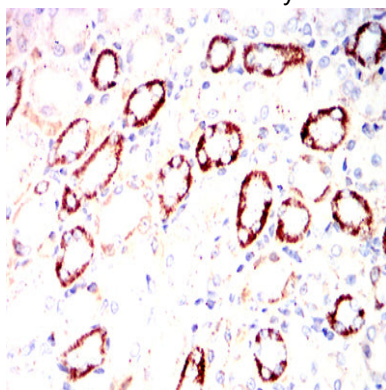


Immunohistochemical analysis of paraffin-embedded human rectum cancer tissues using ZP2 mouse mAb with DAB staining.

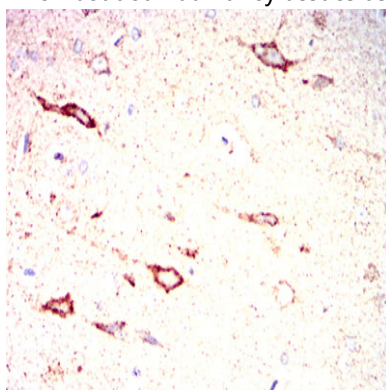
**Product Name: ZP2 Mouse Monoclonal Antibody**  
**Catalog #: AMM82967**



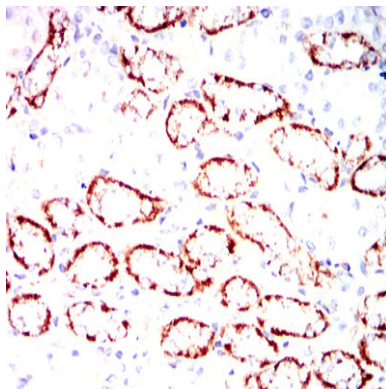
Immunohistochemical analysis of paraffin-embedded mouse kidney tissues using ZP2 mouse mAb with DAB staining.



Immunohistochemical analysis of paraffin-embedded Rat kidney tissues using ZP2 mouse mAb with DAB staining.



Immunohistochemical analysis of paraffin-embedded Rat cerebrum tissues using ZP2 mouse mAb with DAB staining.



**Product Name: ZP2 Mouse Monoclonal Antibody**  
**Catalog #: AMM82967**



---

Immunohistochemical analysis of paraffin-embedded Rabbit kidney tissues using ZP2 mouse mAb with DAB staining.

**Note**

For research use only.