

**Product Name: MRE11 Mouse Monoclonal Antibody**  
**Catalog #: AMM82962**



## Summary

<b>Production Name</b>	MRE11 Mouse Monoclonal Antibody
<b>Description</b>	Mouse Monoclonal Antibody
<b>Host</b>	Mouse
<b>Application</b>	IHC,FC,ELISA
<b>Reactivity</b>	Human, Rat

## Performance

<b>Conjugation</b>	Unconjugated
<b>Modification</b>	Unmodified
<b>Isotype</b>	Mouse IgG1
<b>Clonality</b>	Monoclonal
<b>Form</b>	Liquid
<b>Storage</b>	Store at 4°C short term. Aliquot and store at -20°C long term. Avoid freeze/thaw cycles.
<b>Buffer</b>	Purified antibody in PBS with 0.05% sodium azide
<b>Purification</b>	Affinity Purification

## Immunogen

<b>Gene Name</b>	MRE11
<b>Alternative Names</b>	ATLD; HNGS1; MRE11A; MRE11B
<b>Gene ID</b>	4361.0
<b>SwissProt ID</b>	P49959.Purified recombinant fragment of human MRE11 (AA: 182-582) expressed in E. Coli.

## Application

<b>Dilution Ratio</b>	IHC:1:200-1:1000,FC:1:200-1:400,ELISA:1:10000
<b>Molecular Weight</b>	80.6kDa

## Background

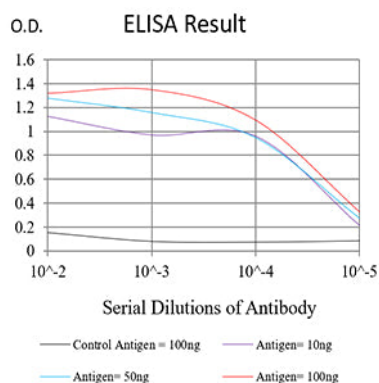
**Product Name: MRE11 Mouse Monoclonal Antibody**  
**Catalog #: AMM82962**



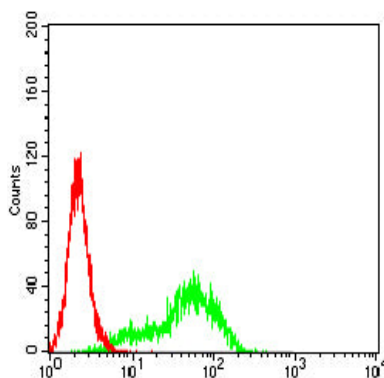
This gene encodes a nuclear protein involved in homologous recombination, telomere length maintenance, and DNA double-strand break repair. By itself, the protein has 3' to 5' exonuclease activity and endonuclease activity. The protein forms a complex with the RAD50 homolog; this complex is required for nonhomologous joining of DNA ends and possesses increased single-stranded DNA endonuclease and 3' to 5' exonuclease activities. In conjunction with a DNA ligase, this protein promotes the joining of noncomplementary ends in vitro using short homologies near the ends of the DNA fragments. This gene has a pseudogene on chromosome 3. Alternative splicing of this gene results in two transcript variants encoding different isoforms.

## Research Area

## Image Data

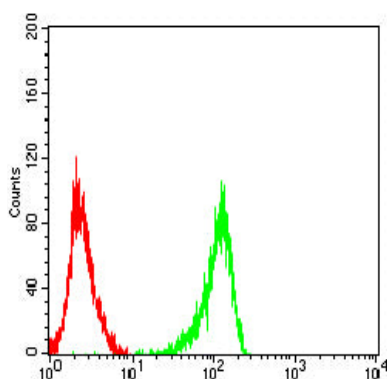


Black line: Control Antigen (100 ng);Purple line: Antigen (10ng); Blue line: Antigen (50 ng); Red line:Antigen (100 ng)

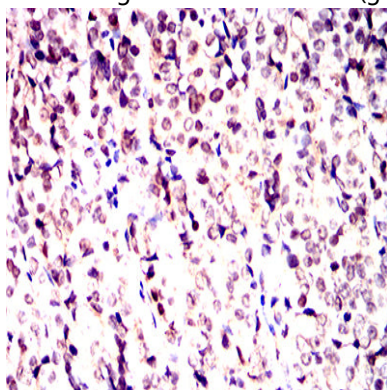


Flow cytometric analysis of HeLa cells using MRE11 mouse mAb (green) and negative control (red).

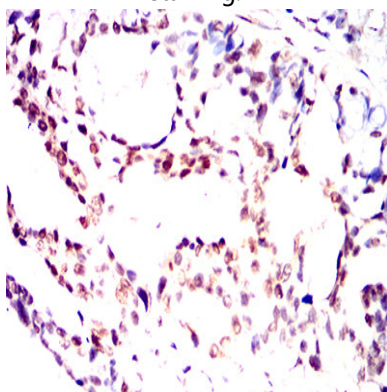
**Product Name: MRE11 Mouse Monoclonal Antibody**  
**Catalog #: AMM82962**



Flow cytometric analysis of K562 cells using MRE11 mouse mAb (green) and negative control (red).



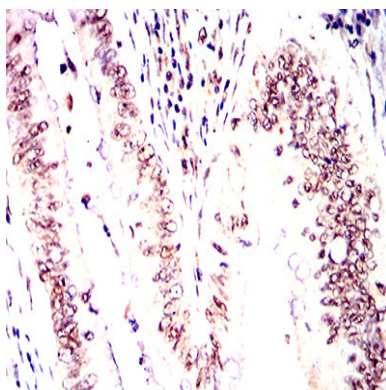
Immunohistochemical analysis of paraffin-embedded human bladder cancer tissues using MRE11 mouse mAb with DAB staining.



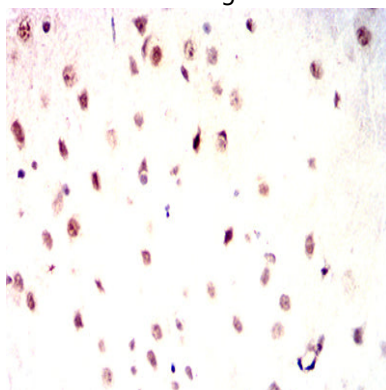
Immunohistochemical analysis of paraffin-embedded human ovarian cancer tissues using MRE11 mouse mAb with DAB staining.

**Product Name: MRE11 Mouse Monoclonal Antibody**  
**Catalog #: AMM82962**

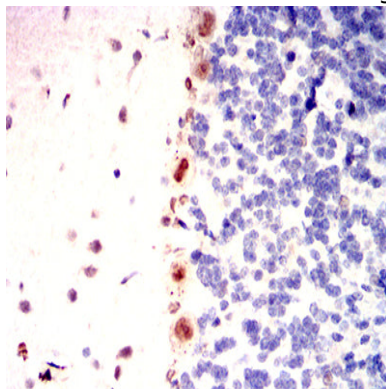
---



Immunohistochemical analysis of paraffin-embedded human rectum cancer tissues using MRE11 mouse mAb with DAB staining.



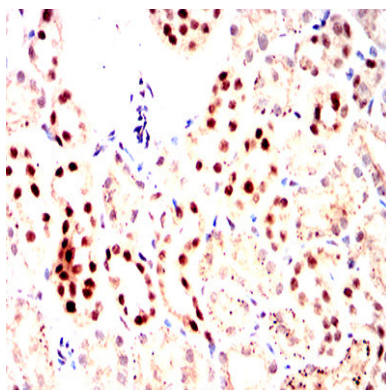
Immunohistochemical analysis of paraffin-embedded rat brain tissues using MRE11 mouse mAb with DAB staining.



Immunohistochemical analysis of paraffin-embedded rat cerebellum tissues using MRE11 mouse mAb with DAB staining.

**Product Name: MRE11 Mouse Monoclonal Antibody**  
**Catalog #: AMM82962**

---



Immunohistochemical analysis of paraffin-embedded rat kidney tissues using MRE11 mouse mAb with DAB staining.

**Note**

For research use only.