
Product Name: PRL Mouse Monoclonal Antibody**Catalog #: AMM82955**

For research use only.

Summary

| | |
|----------------------|---|
| Description | Mouse monoclonal Antibody |
| Host | Mouse |
| Application | WB,IHC,ELISA,FC |
| Reactivity | Human |
| Conjugation | Unconjugated |
| Modification | Unmodified |
| Isotype | Mouse IgG2a |
| Clonality | Monoclonal |
| Form | Liquid |
| Concentration | 1mg/ml |
| Storage | Aliquot and store at -20°C (valid for 12 months). Avoid freeze/thaw cycles. |
| Shipping | Ice bags |
| Buffer | Purified antibody in PBS with 0.05% sodium azide |
| Purification | Affinity Purification |

Application

| | |
|-------------------------|--|
| Dilution Ratio | WB 1:500-1:2000,IHC 1:200-1:1000,ELISA 1:5000-1:20000,FC 1:200-1:400 |
| Molecular Weight | 70kDa |

Antigen Information

| | |
|--------------------------|--|
| Gene Name | PRL |
| Alternative Names | GHA1 |
| Gene ID | 5617.0 |
| SwissProt ID | P01236 |
| Immunogen | Purified recombinant fragment of human PRL (AA:29-227) expressed in E. Coli. |

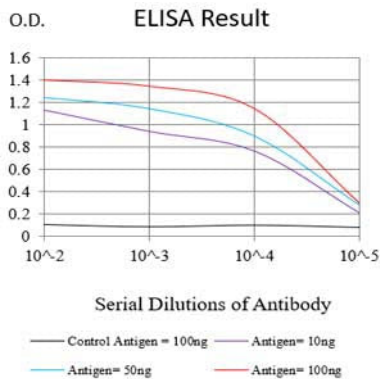
Background

This gene encodes the anterior pituitary hormone prolactin. This secreted hormone is a growth regulator for many tissues, including cells of the immune system. It may also play a role in cell survival by suppressing apoptosis, and it is essential for lactation. Alternative splicing results in multiple transcript variants that encode the same protein.

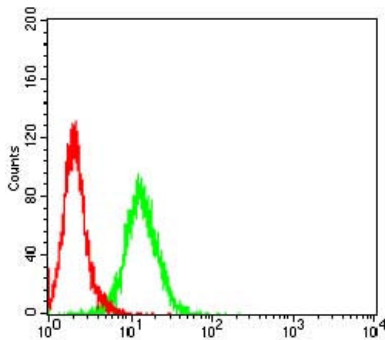
Research Area

PI3K-Akt signaling pathway

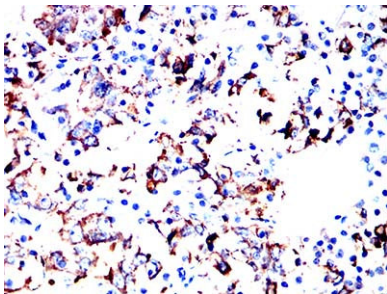
Image Data



Black line: Control Antigen (100 ng);Purple line: Antigen (10ng); Blue line: Antigen (50 ng); Red line:Antigen (100 ng)



Flow cytometric analysis of Hela cells using PRL mouse mAb (green) and negative control (red).



Immunohistochemical analysis of paraffin-embedded human hypophysis tissues using PRL mouse mAb with DAB staining.