
Product Name: PLIN3 Mouse Monoclonal Antibody**Catalog #: AMM82942**

For research use only.

Summary

Description	Mouse monoclonal Antibody
Host	Mouse
Application	WB,ICC,FC
Reactivity	Human
Conjugation	Unconjugated
Modification	Unmodified
Isotype	Mouse IgG2a
Clonality	Monoclonal
Form	Liquid
Concentration	1mg/ml
Storage	Aliquot and store at -20°C (valid for 12 months). Avoid freeze/thaw cycles.
Shipping	Ice bags
Buffer	Purified antibody in PBS with 0.05% sodium azide
Purification	Affinity Purification

Application

Dilution Ratio	WB 1:500-1:2000,ICC 1:100-1:500,FC 1:200-1:400
Molecular Weight	47kDa

Antigen Information

Gene Name	PLIN3
Alternative Names	PP17; TIP47; M6PRBP1
Gene ID	10226.0
SwissProt ID	O60664
Immunogen	Purified recombinant fragment of human PLIN3 expressed in E. Coli.

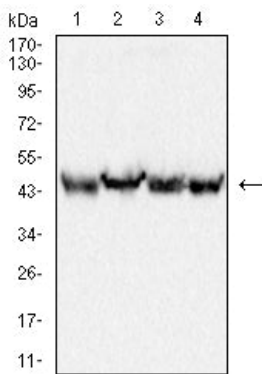
Background

Mannose 6-phosphate receptors (MPRs) deliver lysosomal hydrolase from the Golgi to endosomes and then return to the Golgi complex. The protein encoded by this gene interacts with the cytoplasmic domains of both cation-independent and cation-dependent MPRs, and is required for endosome-to-Golgi transport. This protein also binds directly to the GTPase RAB9

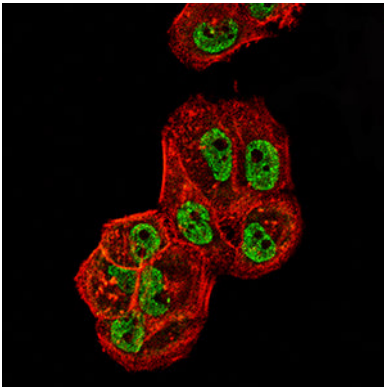
(RAB9A), a member of the RAS oncogene family. The interaction with RAB9 has been shown to increase the affinity of this protein for its cargo. Multiple transcript variants encoding different isoforms have been found for this gene.

Research Area

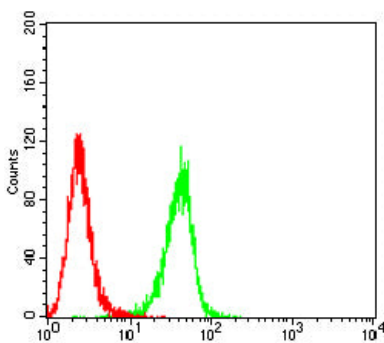
Image Data



Western blot analysis using PLIN3 mouse mAb against THP-1 (1), HepG2 (2), K562 (3) and HeLa (4) cell lysate.



Immunofluorescence analysis of HeLa cells using PLIN3 mouse mAb (green). Blue: DRAQ5 fluorescent DNA dye. Red: Actin filaments have been labeled with Alexa Fluor- 555 phalloidin.



Flow cytometric analysis of HeLa cells using PLIN3 mouse mAb (green) and negative control (red).