

---

**Product Name: TOP1 Mouse Monoclonal Antibody****Catalog #: AMM82935**

For research use only.

**Summary**

<b>Description</b>	Mouse monoclonal Antibody
<b>Host</b>	Mouse
<b>Application</b>	WB,ICC,FC
<b>Reactivity</b>	Human, Mouse
<b>Conjugation</b>	Unconjugated
<b>Modification</b>	Unmodified
<b>Isotype</b>	Mouse IgG1
<b>Clonality</b>	Monoclonal
<b>Form</b>	Liquid
<b>Concentration</b>	1mg/ml
<b>Storage</b>	Aliquot and store at -20°C (valid for 12 months). Avoid freeze/thaw cycles.
<b>Shipping</b>	Ice bags
<b>Buffer</b>	Purified antibody in PBS with 0.05% sodium azide
<b>Purification</b>	Affinity Purification

**Application**

<b>Dilution Ratio</b>	WB 1:500-1:2000,ICC 1:100-1:400,FC 1:200-1:400
<b>Molecular Weight</b>	90.7kDa

**Antigen Information**

<b>Gene Name</b>	TOP1
<b>Alternative Names</b>	TOPI
<b>Gene ID</b>	7150.0
<b>SwissProt ID</b>	P11387
<b>Immunogen</b>	Purified recombinant fragment of human TOP1 expressed in E. Coli.

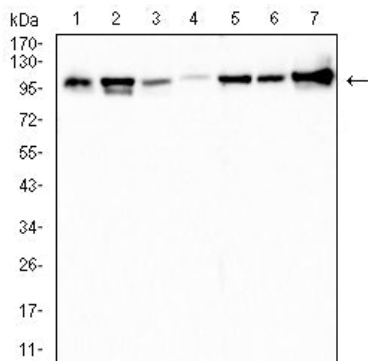
**Background**

This gene encodes a DNA topoisomerase, an enzyme that controls and alters the topologic states of DNA during transcription. This enzyme catalyzes the transient breaking and rejoining of a single strand of DNA which allows the strands to pass through one another, thus altering the topology of DNA. This gene is localized to chromosome 20 and has pseudogenes which reside

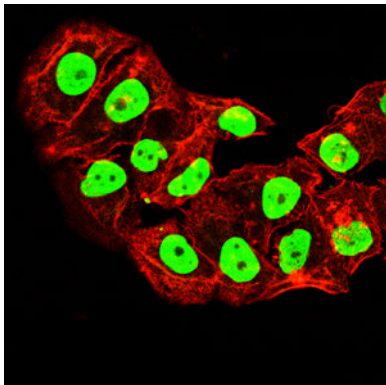
on chromosomes 1 and 22.

## Research Area

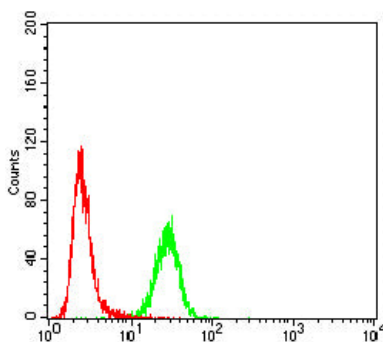
### Image Data



Western blot analysis using TOP1 mouse mAb against HUVEC (1), Jukat (2), MCF-7 (3), PC-12 (4), HeLa (5), NIH/3T3 (6) and HCT116 (7) cell lysate.



Immunofluorescence analysis of HeLa cells using TOP1 mouse mAb (green). Blue: DRAQ5 fluorescent DNA dye. Red: Actin filaments have been labeled with Alexa Fluor-555 phalloidin.



Flow cytometric analysis of HeLa cells using TOP1 mouse mAb (green) and negative control (red).