
Product Name: SH2B2 Mouse Monoclonal Antibody**Catalog #: AMM82918**

For research use only.

Summary

Description	Mouse monoclonal Antibody
Host	Mouse
Application	IHC,ELISA,FC
Reactivity	Human
Conjugation	Unconjugated
Modification	Unmodified
Isotype	Mouse IgG2b
Clonality	Monoclonal
Form	Liquid
Concentration	1mg/ml
Storage	Aliquot and store at -20°C (valid for 12 months). Avoid freeze/thaw cycles.
Shipping	Ice bags
Buffer	Purified antibody in PBS with 0.05% sodium azide
Purification	Affinity Purification

Application

Dilution Ratio	IHC 1:200-1:1000,ELISA 1:5000-1:20000,FC 1:200-1:400
Molecular Weight	67.7kDa

Antigen Information

Gene Name	SH2B2
Alternative Names	APS
Gene ID	10603.0
SwissProt ID	O14492
Immunogen	Purified recombinant fragment of human SH2B2 (AA: 497-676) expressed in E. Coli.

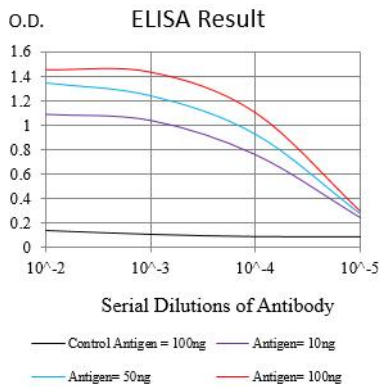
Background

The protein encoded by this gene is expressed in B lymphocytes and contains pleckstrin homology and src homology 2 (SH2) domains. In Burkitt's lymphoma cell lines, it is tyrosine-phosphorylated in response to B cell receptor stimulation. Because it binds Shc independent of stimulation and Grb2 after stimulation, it appears to play a role in signal transduction from the

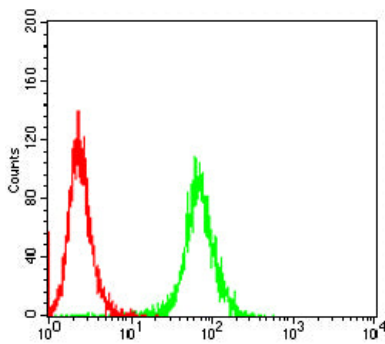
receptor to the Shc/Grb2 pathway.

Research Area

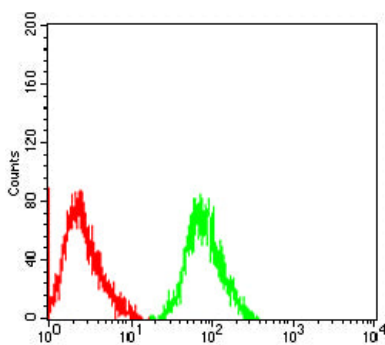
Image Data



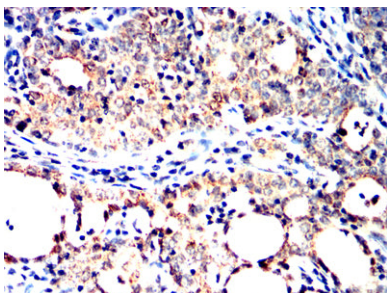
Black line: Control Antigen (100 ng); Purple line: Antigen (10ng); Blue line: Antigen (50 ng); Red line: Antigen (100 ng)



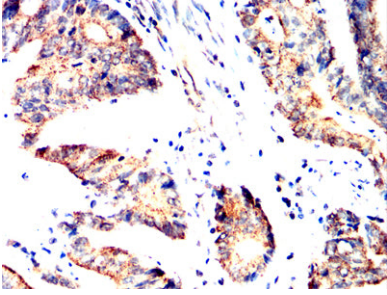
Flow cytometric analysis of HEK293 cells using SH2B2 mouse mAb (green) and negative control (red).



Flow cytometric analysis of HepG2 cells using SH2B2 mouse mAb (green) and negative control (red).



Immunohistochemical analysis of paraffin-embedded human cervical cancer tissues using SH2B2 mouse mAb with DAB staining.



Immunohistochemical analysis of paraffin-embedded human colon cancer tissues using SH2B2 mouse mAb with DAB staining.