

---

**Product Name: NPM2 Mouse Monoclonal Antibody****Catalog #: AMM82912**

For research use only.

**Summary**

<b>Description</b>	Mouse monoclonal Antibody
<b>Host</b>	Mouse
<b>Application</b>	IHC,ELISA,FC
<b>Reactivity</b>	Human
<b>Conjugation</b>	Unconjugated
<b>Modification</b>	Unmodified
<b>Isotype</b>	Mouse IgG1
<b>Clonality</b>	Monoclonal
<b>Form</b>	Liquid
<b>Concentration</b>	1mg/ml
<b>Storage</b>	Aliquot and store at -20°C (valid for 12 months). Avoid freeze/thaw cycles.
<b>Shipping</b>	Ice bags
<b>Buffer</b>	Purified antibody in PBS with 0.05% sodium azide
<b>Purification</b>	Affinity Purification

**Application**

<b>Dilution Ratio</b>	IHC 1:200-1:1000,ELISA 1:5000-1:20000,FC 1:200-1:400
<b>Molecular Weight</b>	24.1kDa

**Antigen Information**

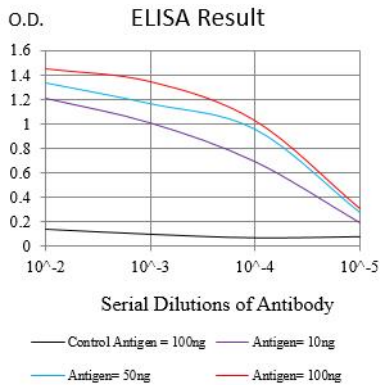
<b>Gene Name</b>	NPM2
<b>Alternative Names</b>	NPM2
<b>Gene ID</b>	10361.0
<b>SwissProt ID</b>	Q86SE8
<b>Immunogen</b>	Purified recombinant fragment of human NPM2 (AA: 1-214) expressed in E. Coli.

**Background**

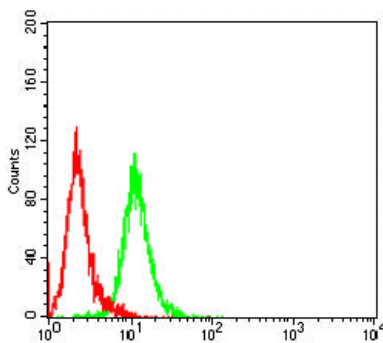
NPM2 (Nucleophosmin/Nucleoplasmin 2) is a Protein Coding gene. Gene Ontology (GO) annotations related to this gene include nucleic acid binding and enzyme binding. An important paralog of this gene is NPM1.

## Research Area

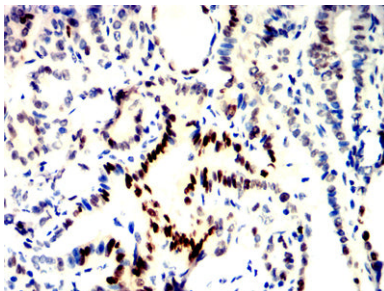
### Image Data



Black line: Control Antigen (100 ng);Purple line: Antigen (10ng); Blue line: Antigen (50 ng); Red line:Antigen (100 ng)



Flow cytometric analysis of HepG2 cells using NPM2 mouse mAb (green) and negative control (red).



Immunohistochemical analysis of paraffin-embedded human thyroid cancer tissues using NPM2 mouse mAb with DAB staining.