

Product Name: SLC22A12 Mouse Monoclonal Antibody
Catalog #: AMM82897



Summary

| | |
|------------------------|------------------------------------|
| Production Name | SLC22A12 Mouse Monoclonal Antibody |
| Description | Mouse Monoclonal Antibody |
| Host | Mouse |
| Application | WB,IHC,FC,ELISA |
| Reactivity | Human, Mouse |

Performance

| | |
|---------------------|--|
| Conjugation | Unconjugated |
| Modification | Unmodified |
| Isotype | Mouse IgG1 |
| Clonality | Monoclonal |
| Form | Liquid |
| Storage | Store at 4°C short term. Aliquot and store at -20°C long term. Avoid freeze/thaw cycles. |
| Buffer | Purified antibody in PBS with 0.05% sodium azide |
| Purification | Affinity Purification |

Immunogen

| | |
|--------------------------|---|
| Gene Name | SLC22A12 |
| Alternative Names | RST; OAT4L; URAT1 |
| Gene ID | 116085.0 |
| SwissProt ID | Q96S37.Purified recombinant fragment of human SLC22A12 (AA: 30-145) expressed in E. Coli. |

Application

| | |
|-------------------------|---|
| Dilution Ratio | WB:1:500-1:2000,IHC:1:200-1:1000,FC:1:200-1:400,ELISA:1:10000 |
| Molecular Weight | 59.6kDa |

Background

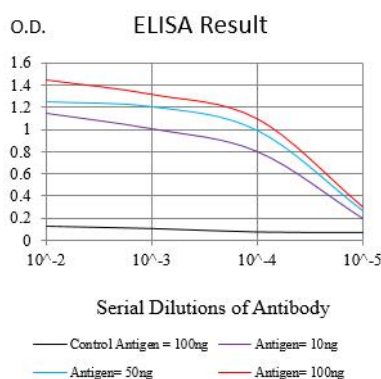
Product Name: SLC22A12 Mouse Monoclonal Antibody
Catalog #: AMM82897



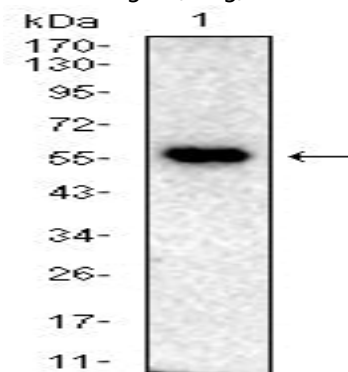
The protein encoded by this gene is a member of the organic anion transporter (OAT) family, and it acts as a urate transporter to regulate urate levels in blood. This protein is an integral membrane protein primarily found in epithelial cells of the proximal tubule of the kidney. An elevated level of serum urate, hyperuricemia, is associated with increased incidences of gout, and mutations in this gene cause renal hypouricemia type 1. Alternative splicing results in multiple transcript variants.

Research Area

Image Data

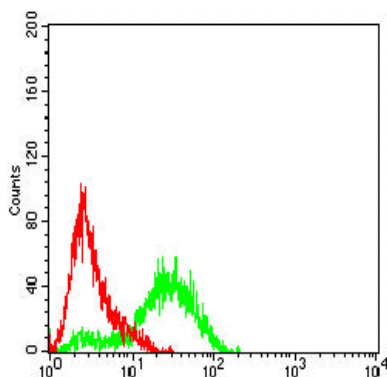


Black line: Control Antigen (100 ng);Purple line: Antigen (10ng); Blue line: Antigen (50 ng); Red line:Antigen (100 ng)

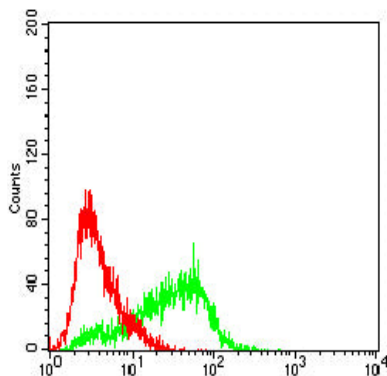


Western blot analysis using SLC22A12 mouse mAb against mouse kidney(1) tissue lysate.

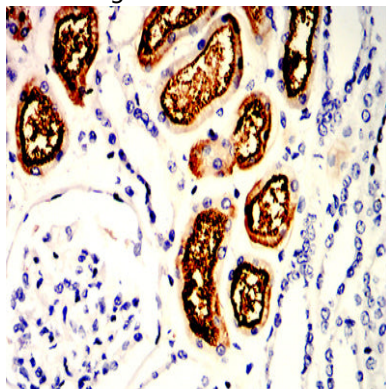
Product Name: SLC22A12 Mouse Monoclonal Antibody
Catalog #: AMM82897



Flow cytometric analysis of HeLa cells using SLC22A12 mouse mAb (green) and negative control (red).



Flow cytometric analysis of HepG2 cells using SLC22A12 mouse mAb (green) and negative control (red).



Immunohistochemical analysis of paraffin-embedded human kidney tissues using SLC22A12 mouse mAb with DAB staining.

Note

For research use only.