

---

**Product Name: MTDH Mouse Monoclonal Antibody****Catalog #: AMM82874**

For research use only.

**Summary**

|                      |   |
|----------------------|---|
| <b>Description</b>   | Mouse monoclonal Antibody   |
| <b>Host</b>          | Mouse   |
| <b>Application</b>   | WB,IHC,ICC,ELISA,FC   |
| <b>Reactivity</b>    | Human, Monkey   |
| <b>Conjugation</b>   | Unconjugated  |
| <b>Modification</b>  | Unmodified  |
| <b>Isotype</b>       | Mouse IgG1  |
| <b>Clonality</b>     | Monoclonal  |
| <b>Form</b>          | Liquid  |
| <b>Concentration</b> | 1mg/ml  |
| <b>Storage</b>       | Aliquot and store at -20°C (valid for 12 months). Avoid freeze/thaw cycles. |
| <b>Shipping</b>      | Ice bags  |
| <b>Buffer</b>        | Purified antibody in PBS with 0.05% sodium azide                            |
| <b>Purification</b>  | Affinity Purification   |

**Application**

|                         |   |
|-------------------------|---|
| <b>Dilution Ratio</b>   | WB 1:500-1:2000,IHC 1:200-1:1000,ICC 1:50-1:200,ELISA 1:5000-1:20000,FC 1:200-1:400 |
| <b>Molecular Weight</b> | 75KDa   |

**Antigen Information**

|                          |   |
|--------------------------|---|
| <b>Gene Name</b>         | MTDH  |
| <b>Alternative Names</b> | 3D3; AEG1; AEG-1; LYRIC; LYRIC/3D3  |
| <b>Gene ID</b>           | 92140.0   |
| <b>SwissProt ID</b>      | Q86UE4  |
| <b>Immunogen</b>         | Purified recombinant fragment of human MTDH (AA: 200-450) expressed in mammalian. |

**Background**

MTDH (Metadherin) is a Protein Coding gene. Diseases associated with MTDH include Tongue Carcinoma and Gallbladder Adenocarcinoma. Among its related pathways are Gastric Cancer Network 2 and Validated targets of C-MYC transcriptional activation. Gene Ontology (GO) annotations related to this gene include double-stranded RNA binding. An important paralog

of this gene is MAMSTR.

## Research Area

## Image Data

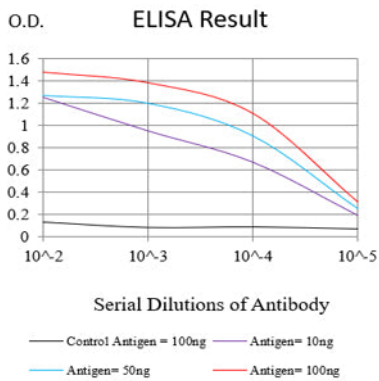
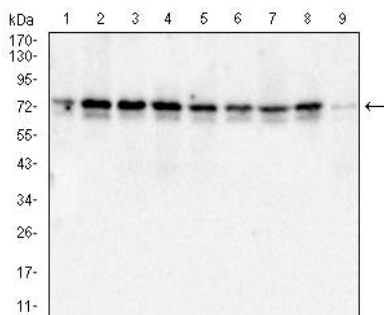
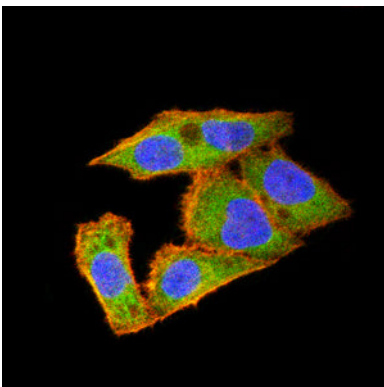


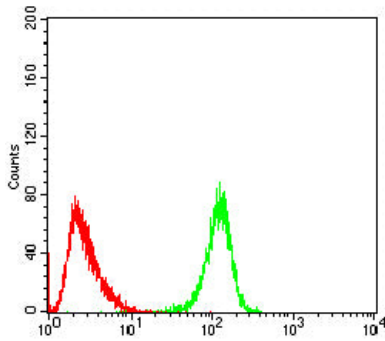
Figure1:Black line: Control Antigen (100 ng);Purple line: Antigen (10ng); Blue line: Antigen (50 ng); Red line:Antigen (100 ng)



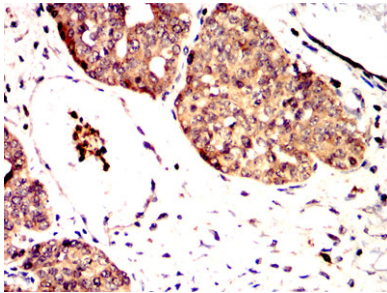
Western blot analysis using MTDH mouse mAb against MCF-7 (1), T47D (2), Jurkat (3), K562 (4), HeLa(5), PC-3(6), HepG2(7), A431(8) and COS7 (9) cell lysate.



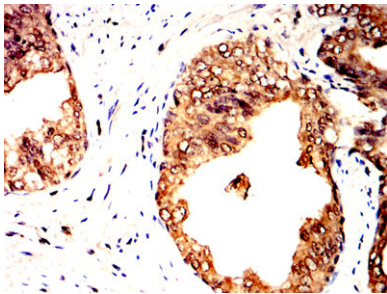
Immunofluorescence analysis of HeLa cells using MTDH mouse mAb (green). Blue: DRAQ5 fluorescent DNA dye. Red: Actin filaments have been labeled with Alexa Fluor- 555 phalloidin.



Flow cytometric analysis of HeLa cells using MTDH mouse mAb (green) and negative control (red).



Immunohistochemical analysis of paraffin-embedded human ovarian cancer tissues using MTDH mouse mAb with DAB staining.



Immunohistochemical analysis of paraffin-embedded human prostate cancer tissues using MTDH mouse mAb with DAB staining.