

Summary

Production Name	MTDH Mouse Monoclonal Antibody
Description	Mouse Monoclonal Antibody
Host	Mouse
Application	WB,IHC,FC,ELISA
Reactivity	Human, Monkey

Performance

Conjugation	Unconjugated
Modification	Unmodified
Isotype	Mouse IgG1
Clonality	Monoclonal
Form	Liquid
Storage	Store at 4°C short term. Aliquot and store at -20°C long term. Avoid freeze/thaw cycles.
Buffer	Purified antibody in PBS with 0.05% sodium azide
Purification	Affinity Purification

Immunogen

Gene Name	MTDH
Alternative Names	3D3; AEG1; AEG-1; LYRIC; LYRIC/3D3
Gene ID	92140.0
SwissProt ID	Q86UE4.Purified recombinant fragment of human MTDH (AA: 200-450) expressed in mammalian.

Application

Dilution Ratio	WB:1:500-1:2000,IHC:1:200-1:1000,FC:1:200-1:400,ELISA:1:10000
Molecular Weight	75KDa

Background

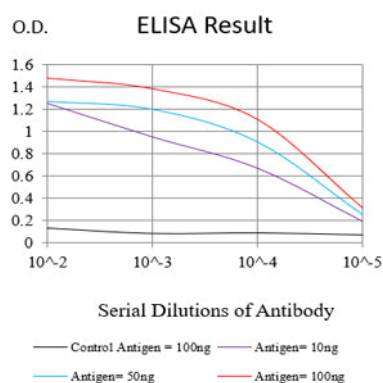
Product Name: MTDH Mouse Monoclonal Antibody
Catalog #: AMM82873



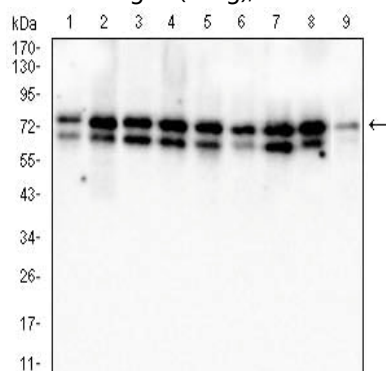
MTDH (Metadherin) is a Protein Coding gene. Diseases associated with MTDH include Tongue Carcinoma and Gallbladder Adenocarcinoma. Among its related pathways are Gastric Cancer Network 2 and Validated targets of C-MYC transcriptional activation. Gene Ontology (GO) annotations related to this gene include double-stranded RNA binding. An important paralog of this gene is MAMSTR.

Research Area

Image Data

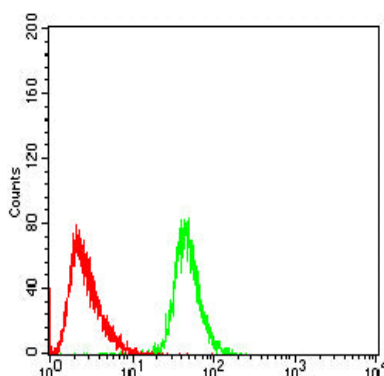


Black line: Control Antigen (100 ng);Purple line: Antigen (10ng); Blue line: Antigen (50 ng); Red line:Antigen (100 ng)

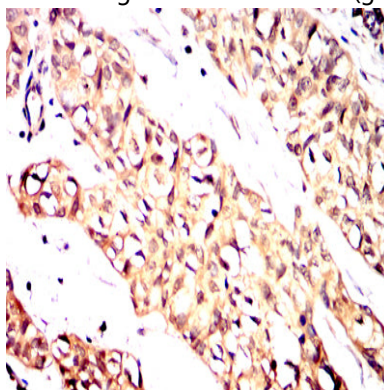


Western blot analysis using MTDH mouse mAb against MCF-7 (1), T47D (2), Jurkat(3), K562 (4), HeLa (5),PC-3 (6), HepG2(7), A431(8) and COS7 (9) cell lysate.

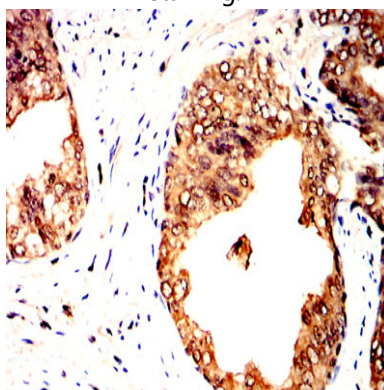
Product Name: MTDH Mouse Monoclonal Antibody
Catalog #: AMM82873



Flow cytometric analysis of Hela cells using MTDH mouse mAb (green) and negative control (red).



Immunohistochemical analysis of paraffin-embedded human bladder cancer tissues using MTDH mouse mAb with DAB staining.



Immunohistochemical analysis of paraffin-embedded human prostate cancer tissues using MTDH mouse mAb with DAB staining.

Note

For research use only.